

Indian Botanic Garden Library

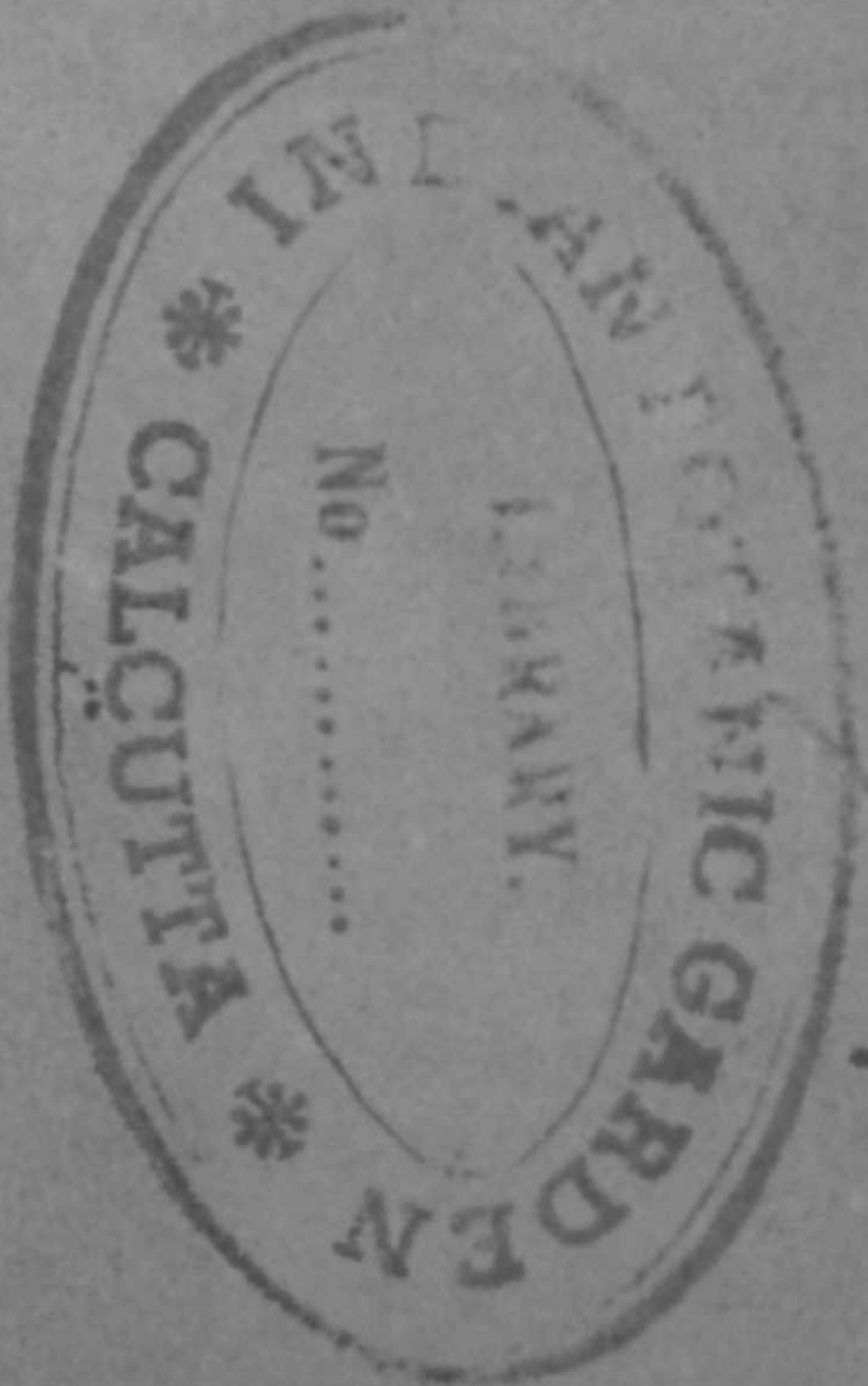
• BOTANICAL SURVEY OF INDIA

CLASS NO.....

BOOK NO... ARE-2

ACC. NO... B-10807





Handwritten text, possibly a date or reference number, partially obscured by the stamp.



**Algæ Scandinavicæ
exsiccatæ**

qua*

adjectis Inaractis

distributis

JOHN ERE ARESCHOUG,

Phil. Doct. Al. filius, in Phil. in Univ. Linc. Lond.
1811. 1812. Am. Acad. Scientiarum Suec. et Soci-
etatis S. Petri in Upsalensis etc. M. 1811.

Neris^{bf} nova'

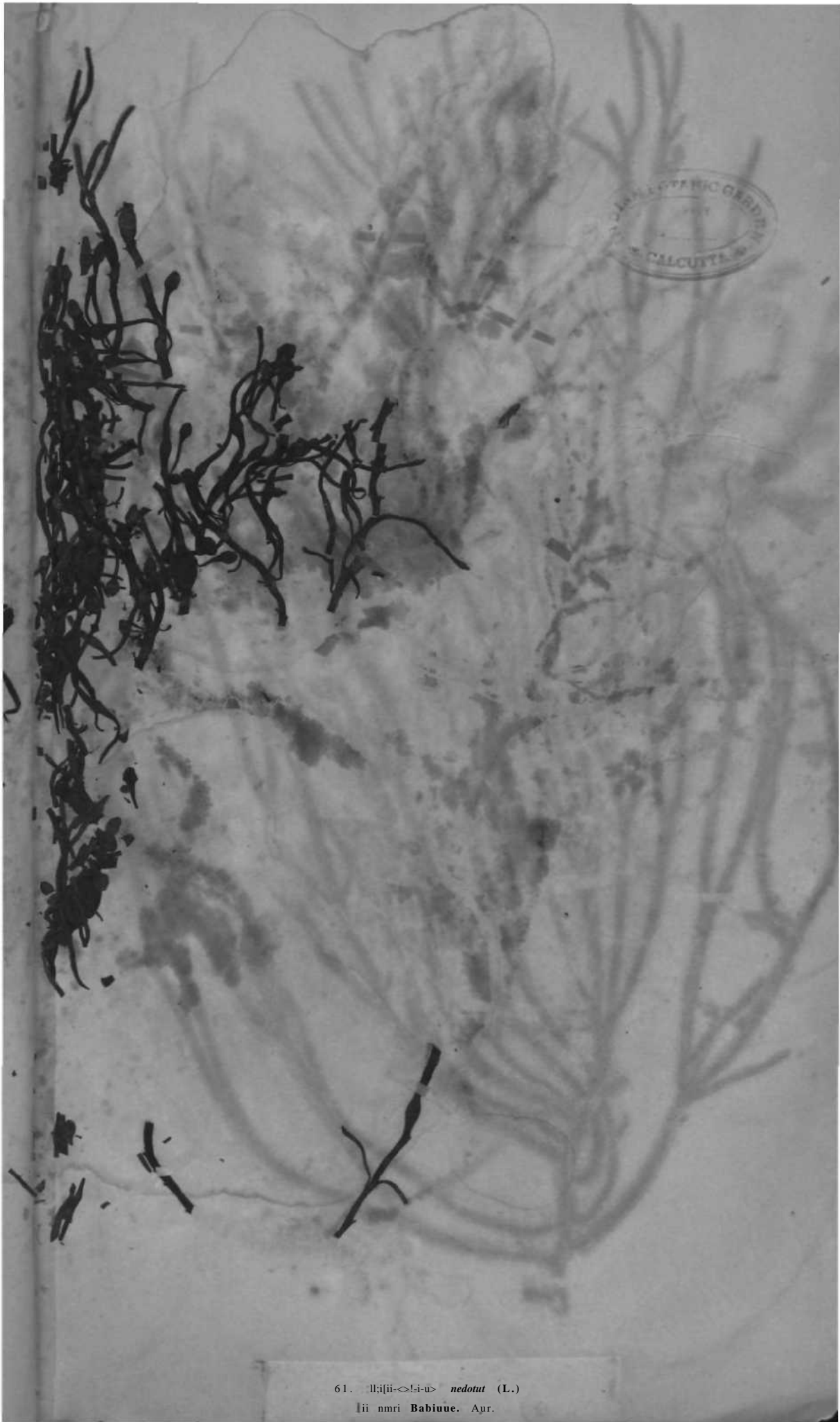
Fasciculus secundus ft tertius

(spuv. 1—130.1)

UP¹SALIK

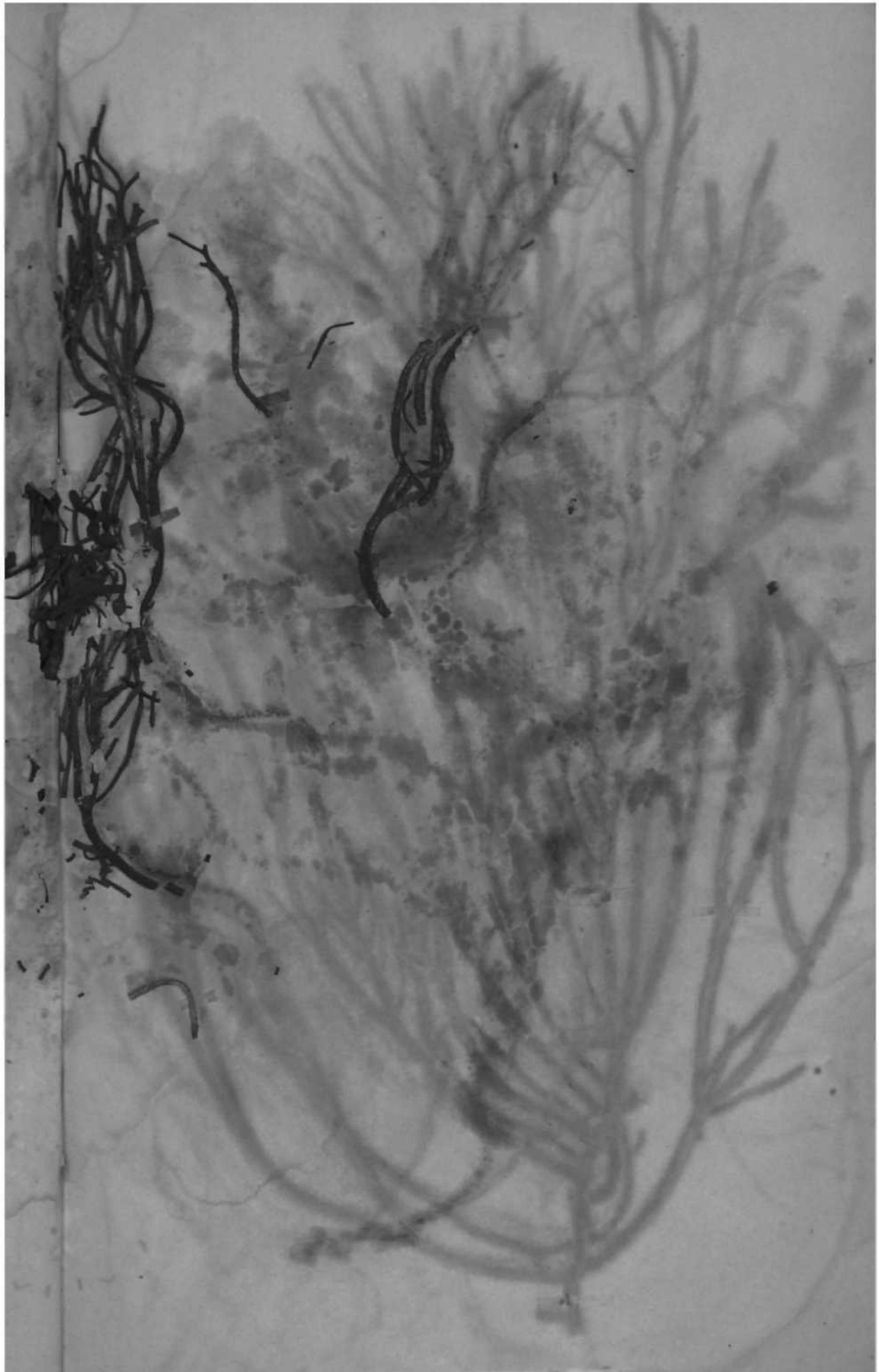
ИПИСЪИ I-II АКАДѢМІИ ТРОГБАРБС.

UCCCLII

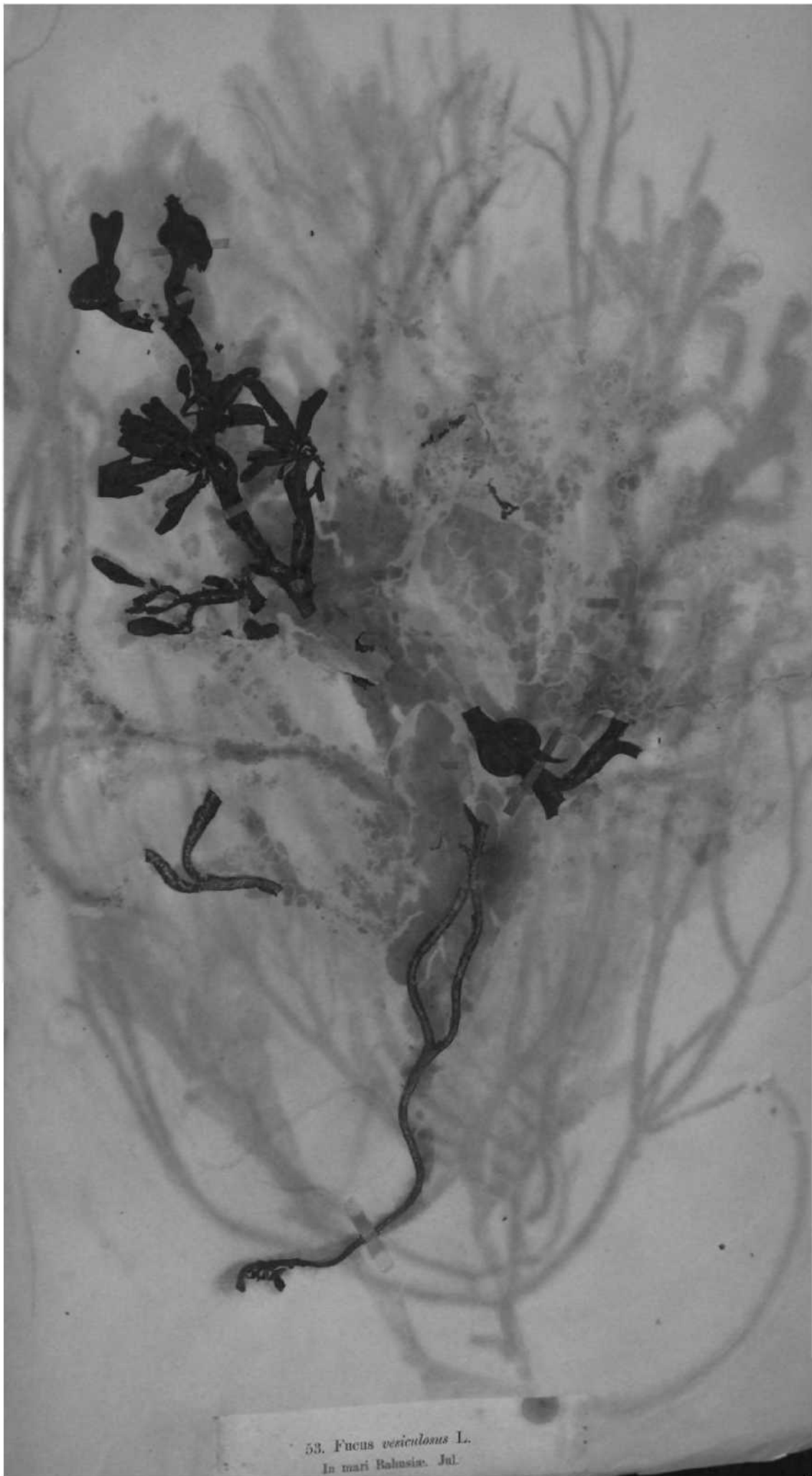


61. *Ilizii->!-i-u>* *nedotut* (L.)

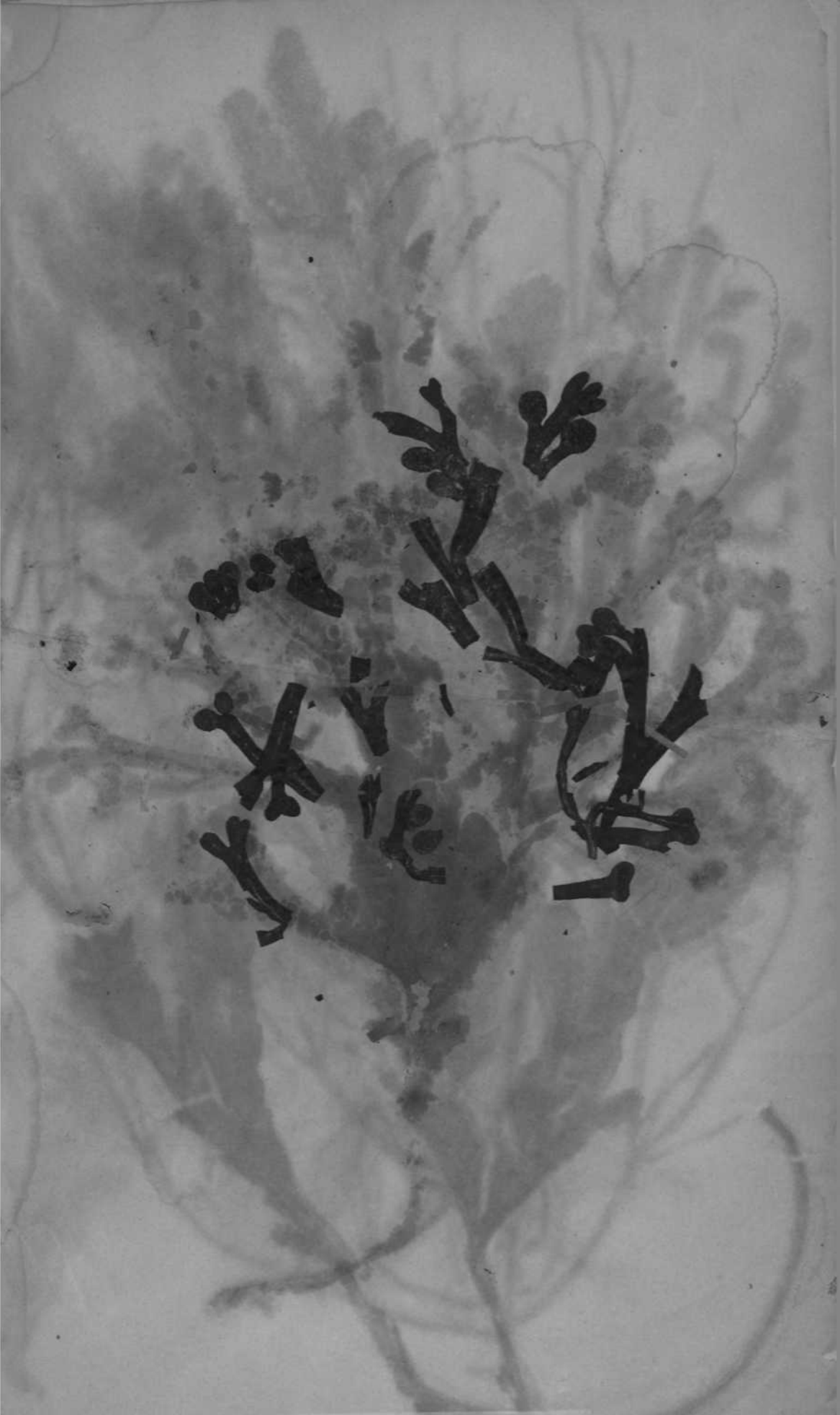
Ilizii **Babiuue.** Apr.



62. *Halicowue* WMM (L.) *furtato** Aresch.
Christin eberS in It:lns.a. ing.



53. *Fucus vesiculosus* L.
In mari Bahasia. Jul.



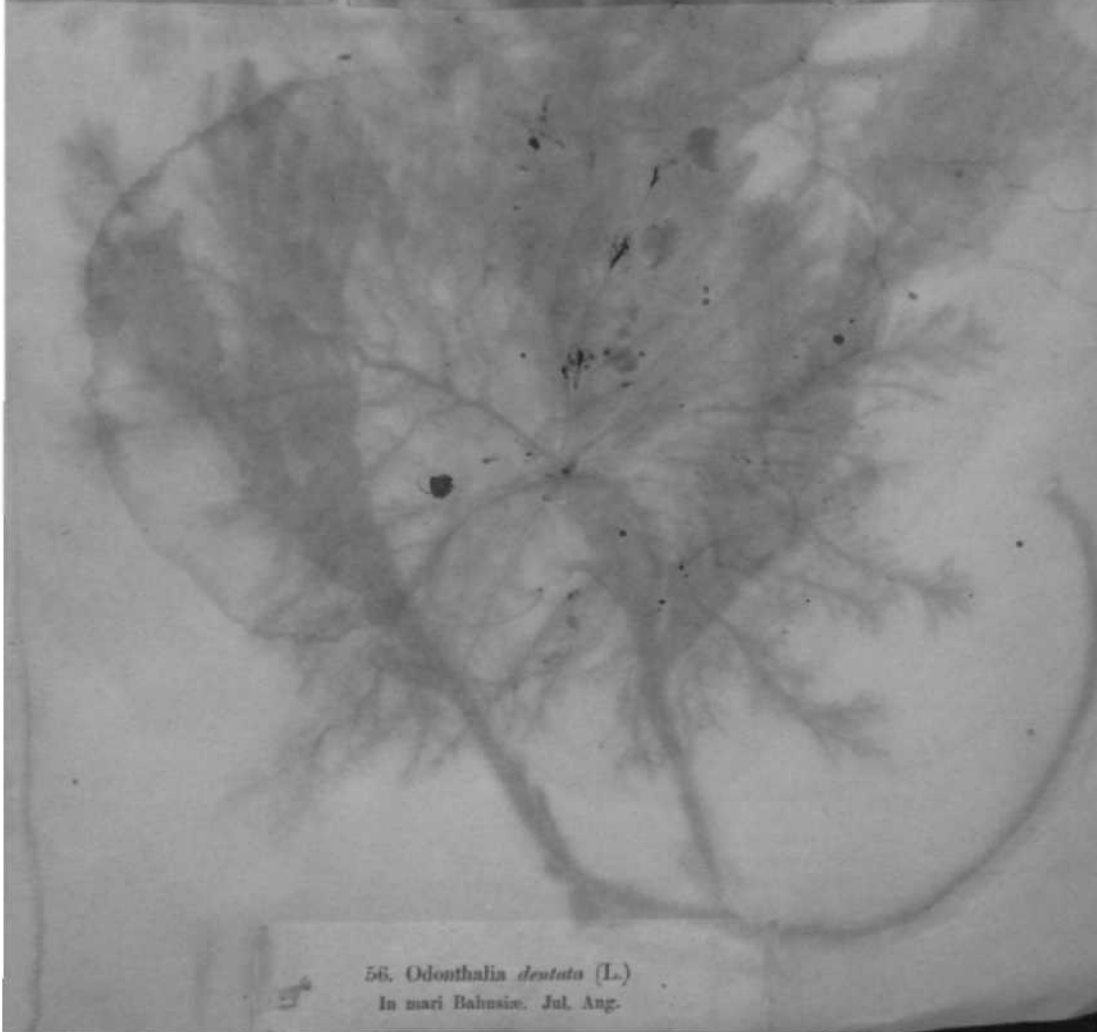
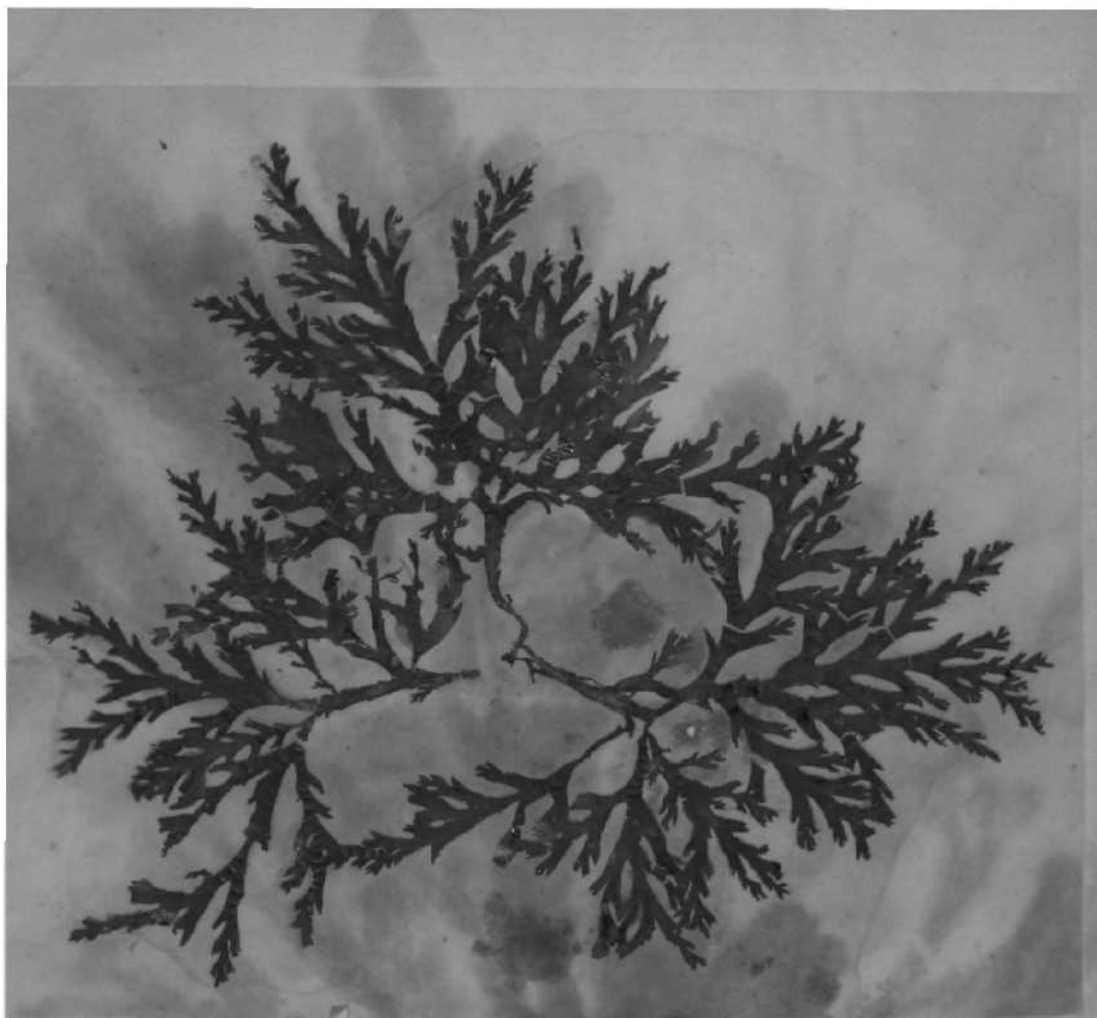
54 *Fucus platycarpus** Thw,

Fiskebillykfskil in Italiuua. Aug.

Est sine omni dubitatione Fucus Stwrcr*1 A*



Ji nmri It^oisio. Aug.



56. *Odonthalia dentata* (L.)
In mari Bahusie. Jul. Aug.



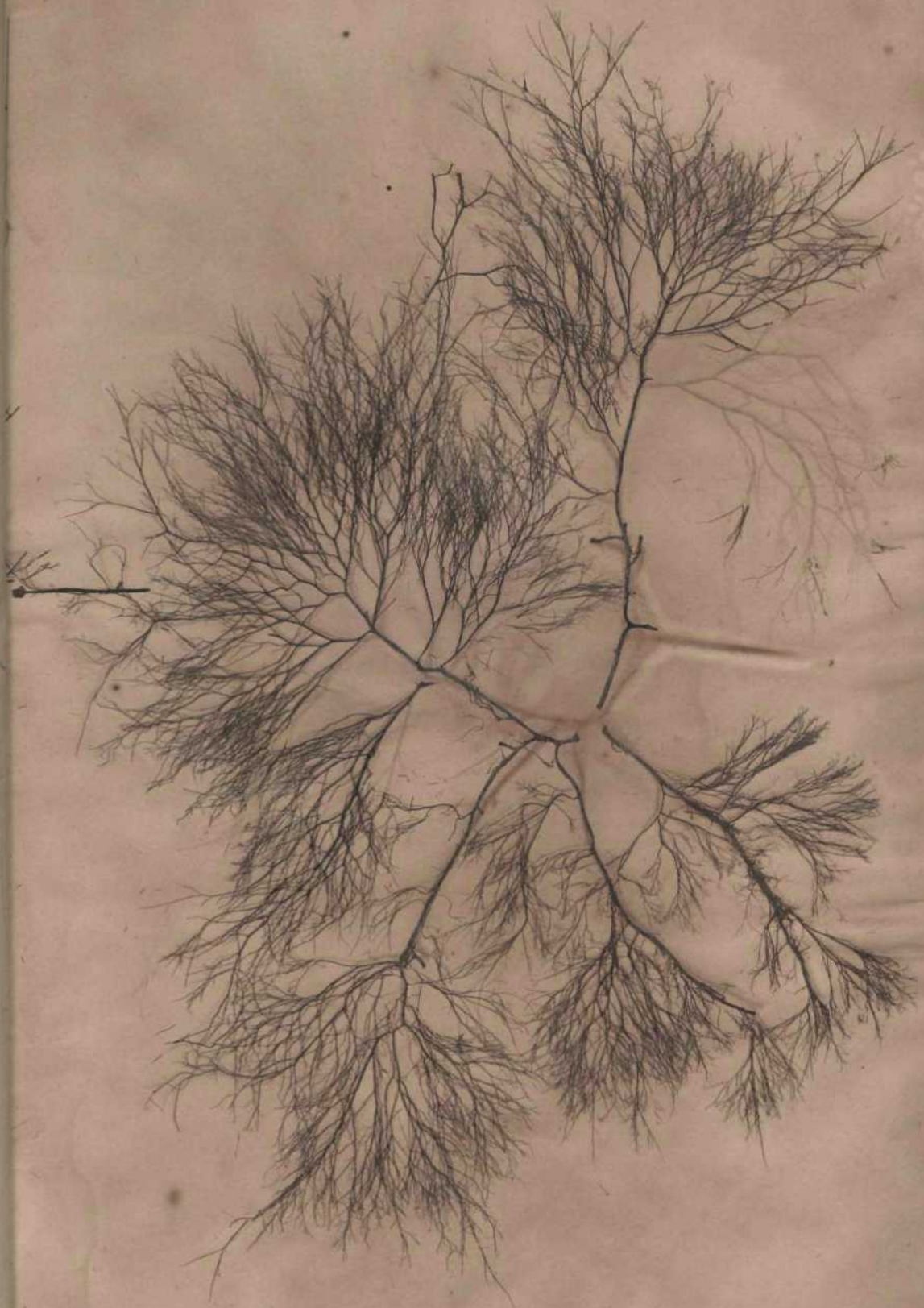
57. *Rhodomela subfusca* (Woodw.)
In mari Bahusio. Aug.



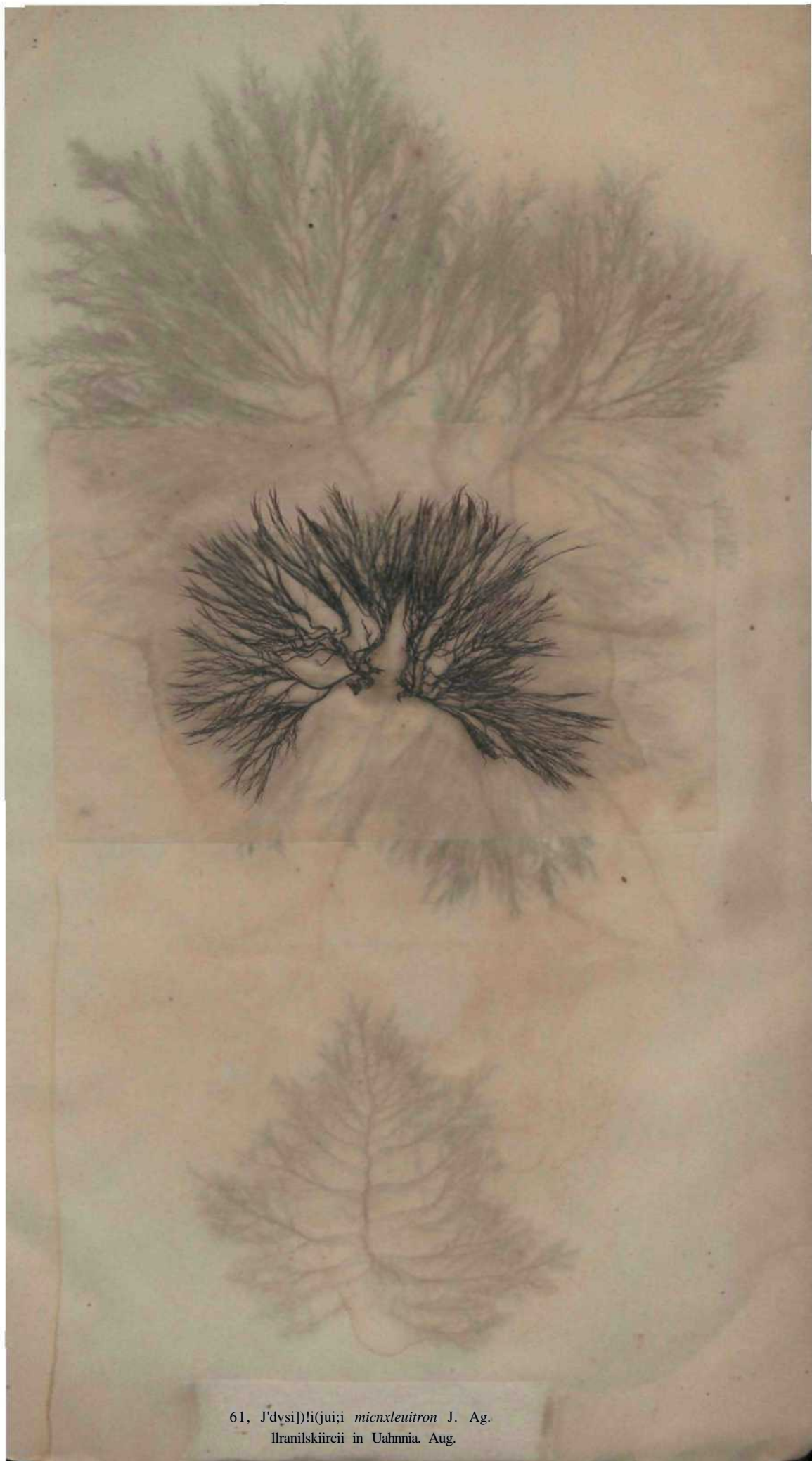
58. UbudimH'k *ijrtirifu* hüt/.
Langedrag prope GotlwhorgBm. Apr.
Domina Sophia /ÜWMCK.



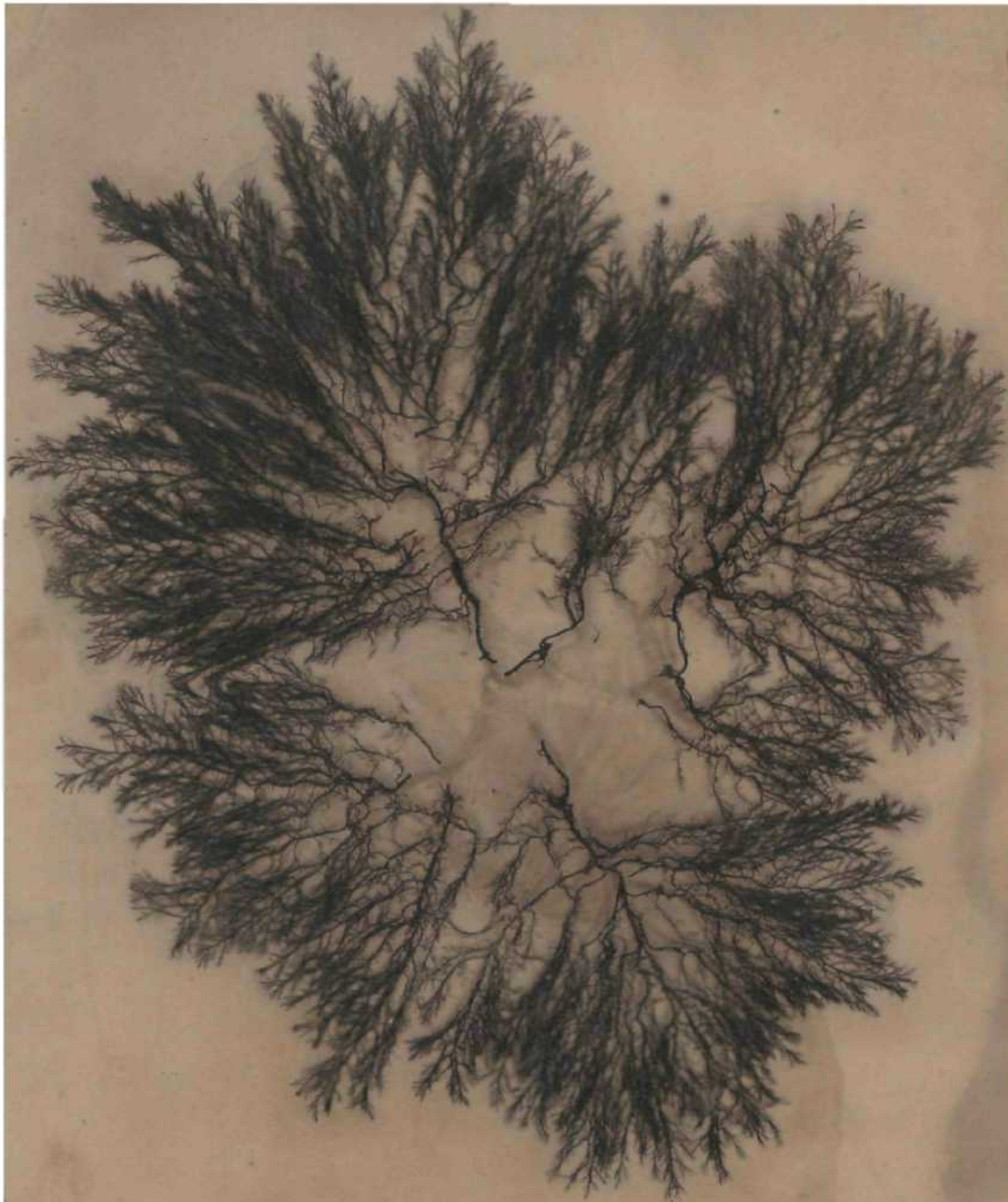
5a, *Dasyn oocinea* (Huds.)
In mari Bahusie. Jul. Aug.



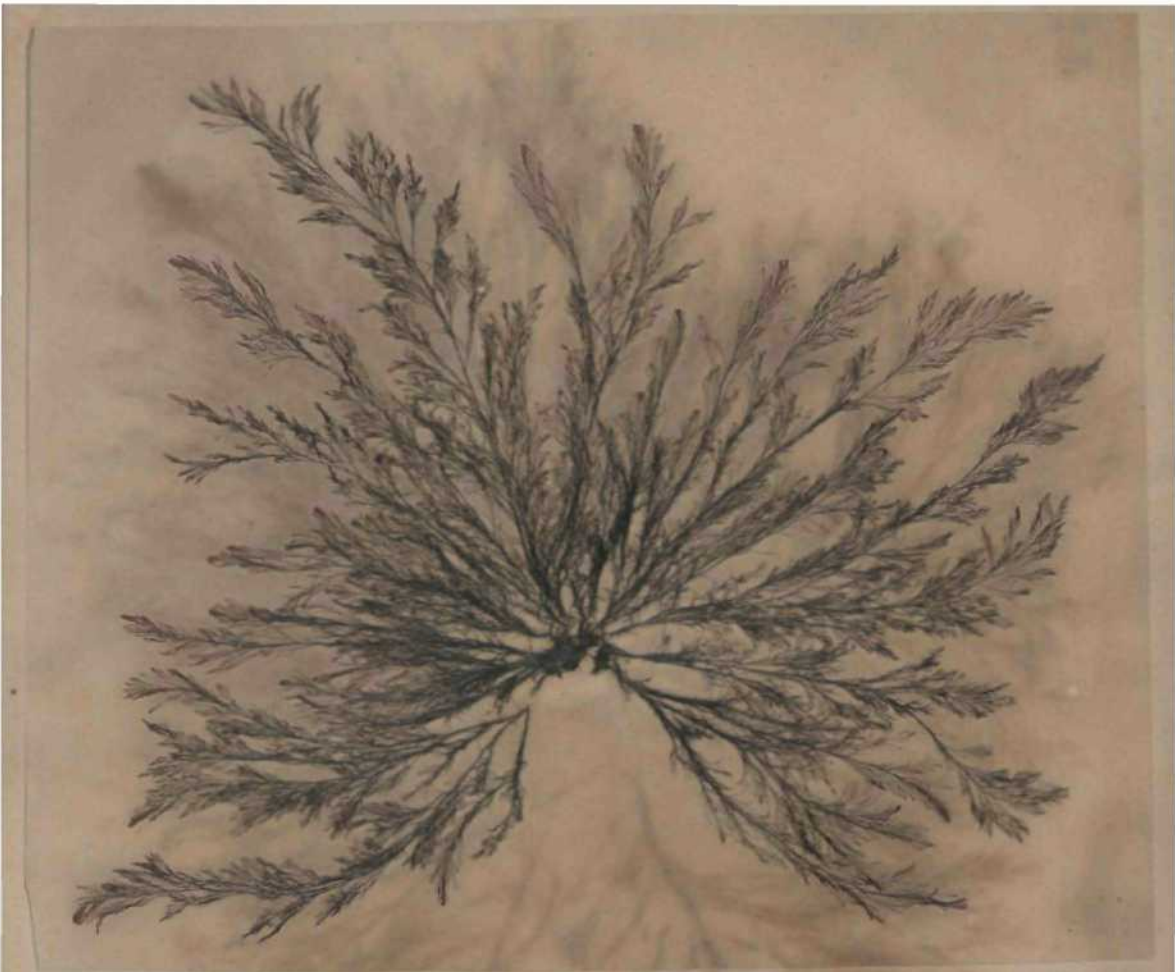
60. *Polysiphmia longata* Ijida
111 niri Rōmō, Jul.



61. J'dysi]li(jui;i micnleuitron J. Ag.
IIranilskiircii in Uahnnia. Aug.



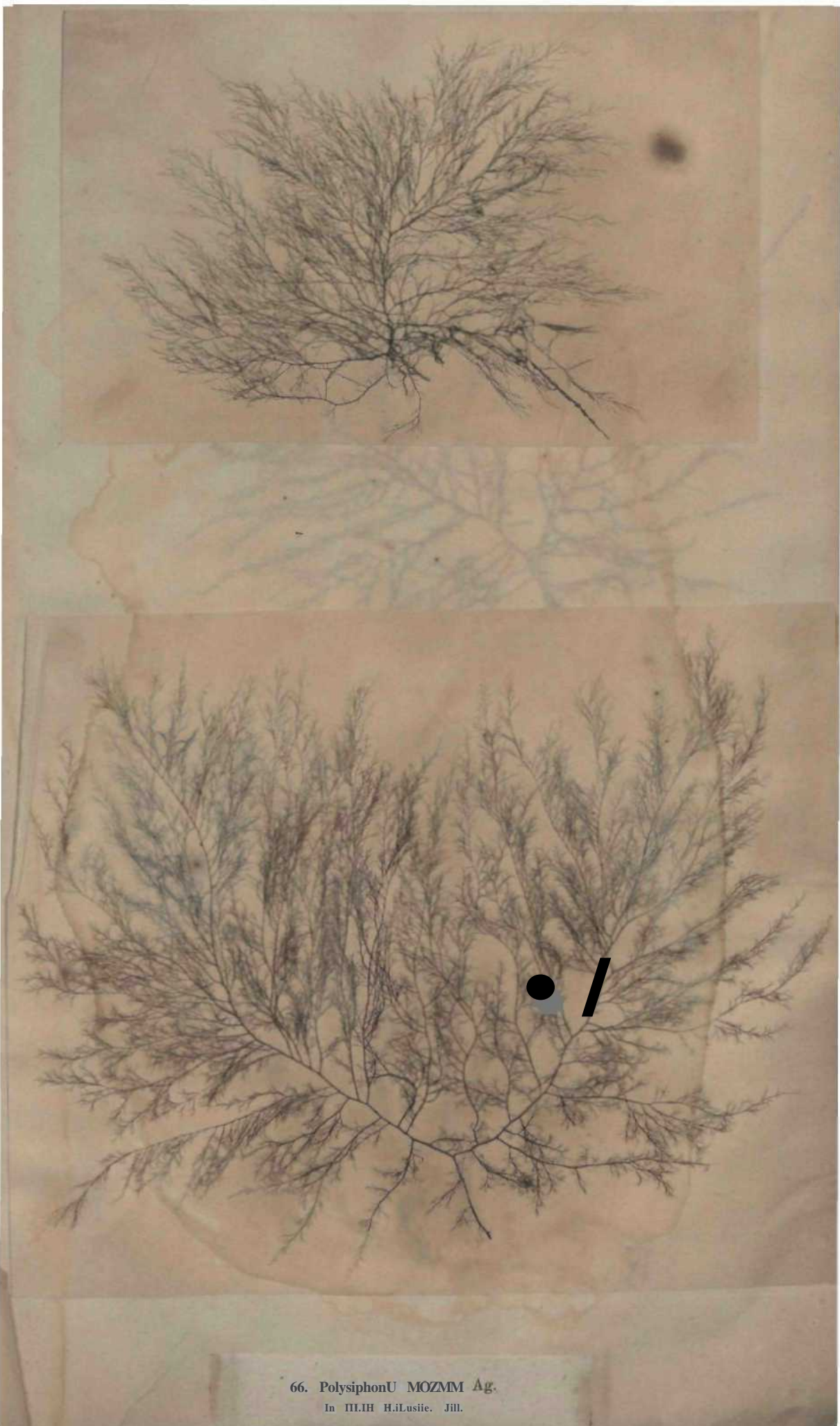
62. *Polysiphonia nigrescens* (Smith.)
In mari Bahusia. Sept.



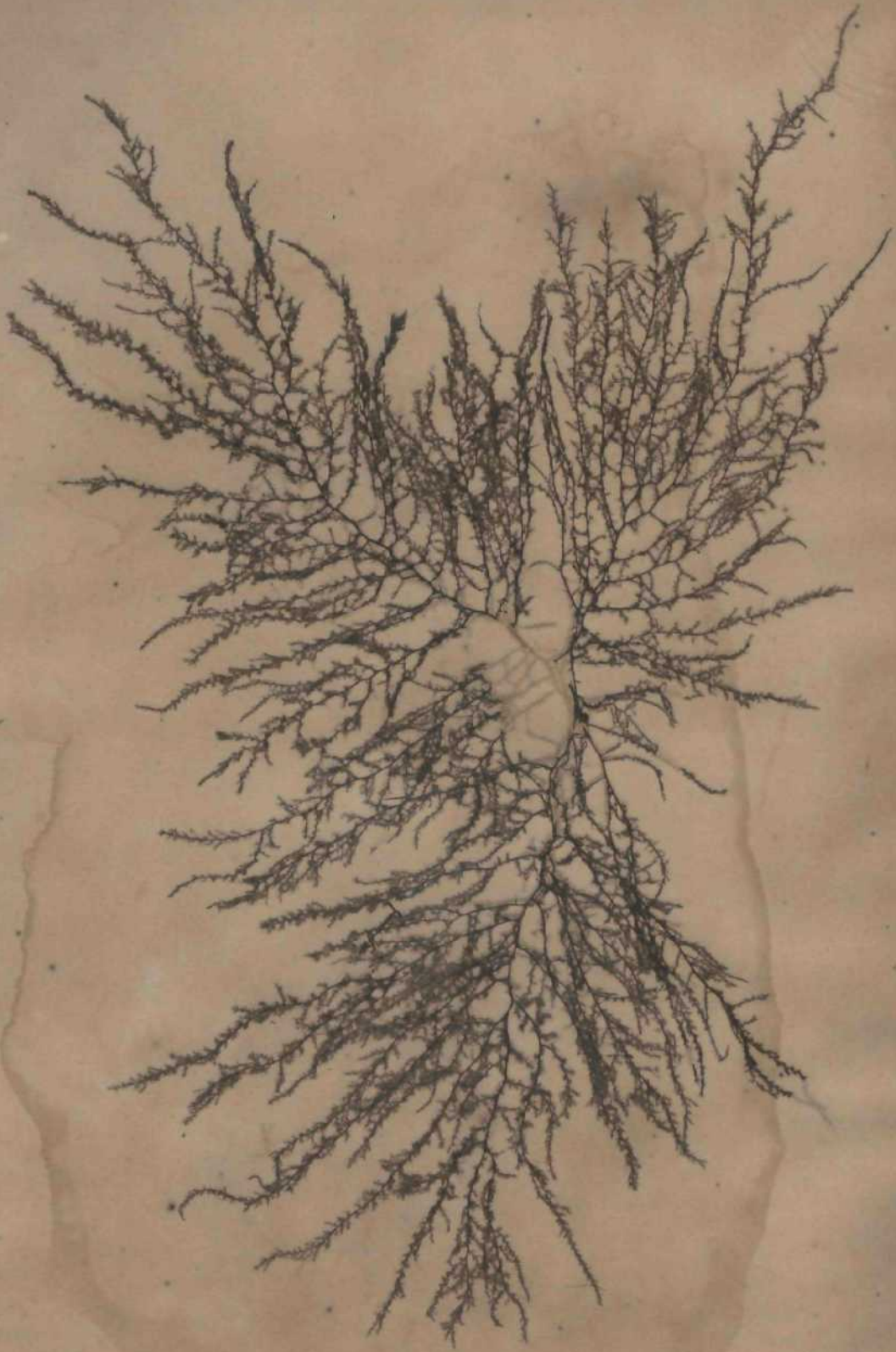
63. *Polysiphonia Brodiai* (Dillw.)
In mari Bahusie. Aug.



64. *Polysiphonia ptidUata* (A{r.)
In mari Bahrie. Ang.



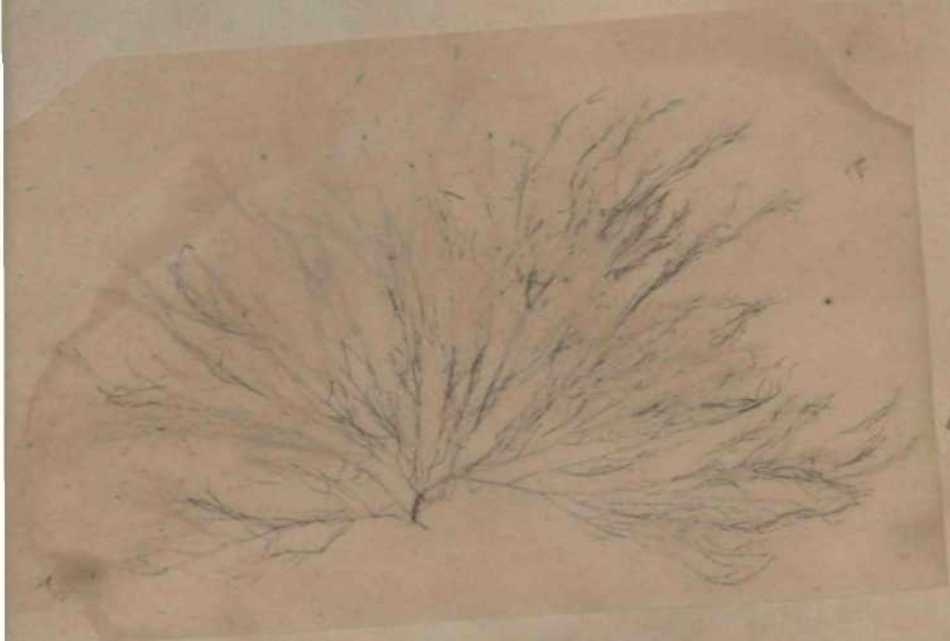
66. Polysiphonia MOZMM Ag.
In III.IH H.i.Lusie. Jll.



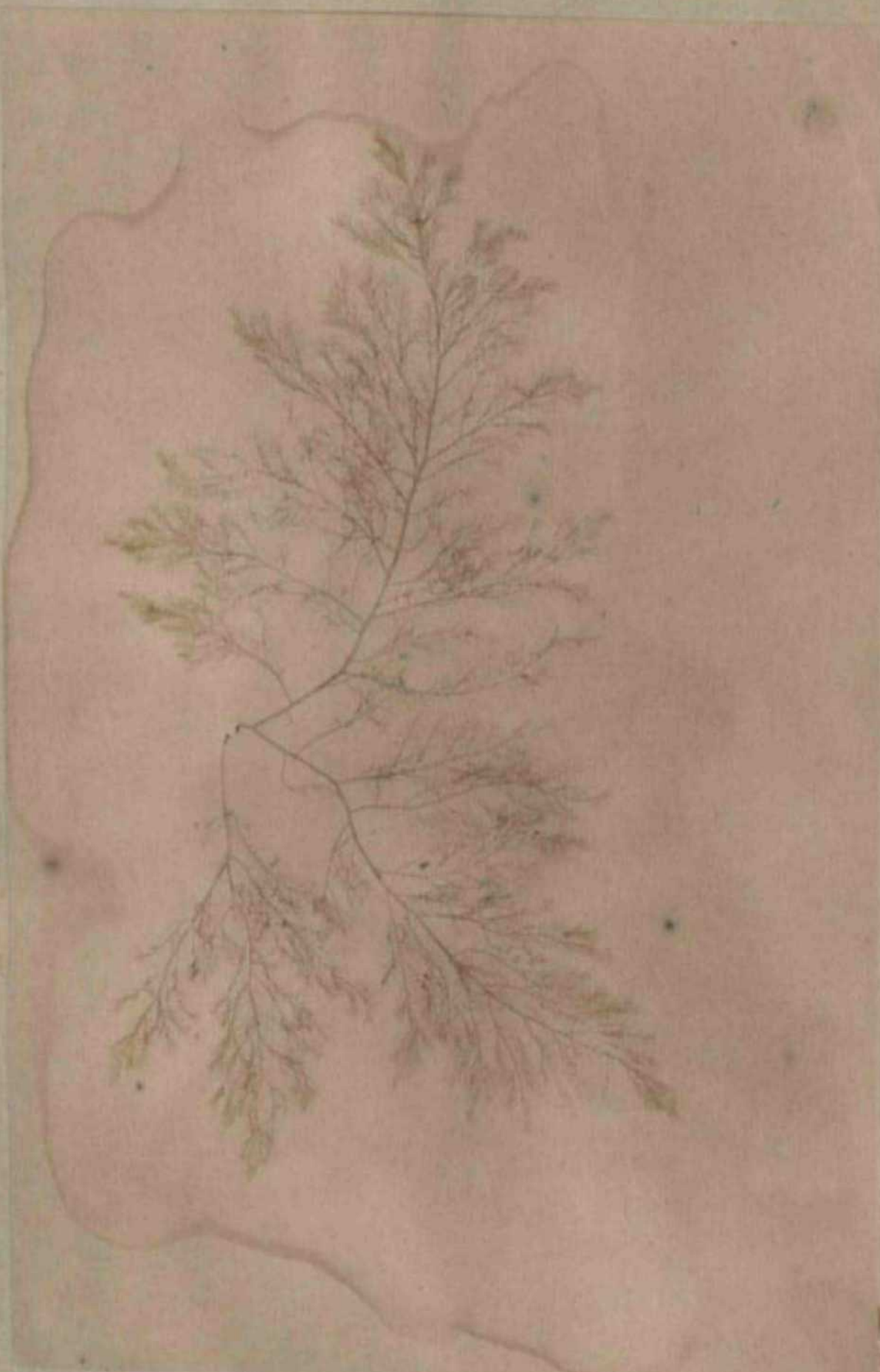
66. *Polysiphonia hyacida* (Woodw.)
In Utah (almsi:'. Aug.



67. *Polysiphonia pinnatifida* 41g. Se. saw.
Brandskären ID filiusia. A>K,

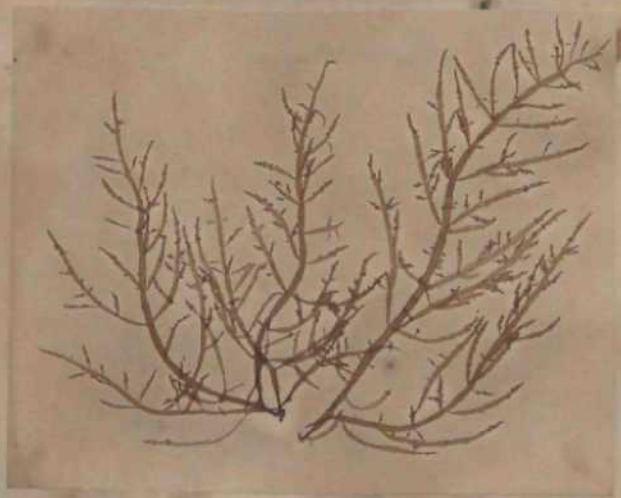


69. *Polysiphonia roseola* (Ag.)
In mari Bahusie. Aug.

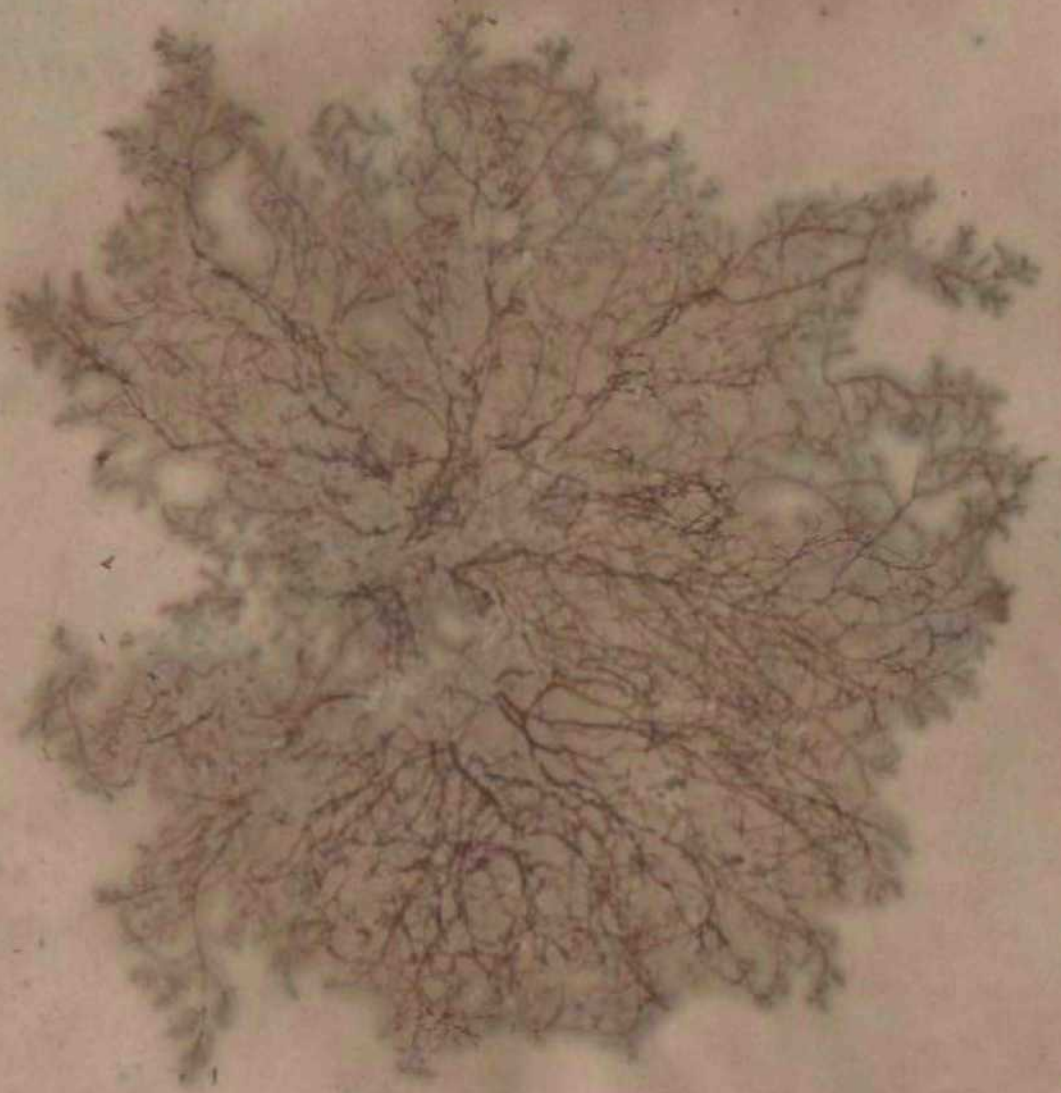


70. Bonnemaisonia asparagoides (Woodw.)

In mari Bahusiae. Aug.



H. L<gt;jiicumri:i *foliforiiiits* (Good 1 W.....w.)
In mari Bahusia. Jun.



72. *Chylocladia clavellosa* (Turn.)
In mari Bahusiae. Aug.



71, *Deleasfria sanguinea* (Ldb.)
In raari BahusiK. Jnl.



74. IMt-ssmši *simioxa* (Good ft Woodw.)

In niftri Babnefo. Jul. Aug.



t

75. *Delesberia alata* (Hilda.)
In man BahrtÜffi. J. A. ug.



7G. *Cystoleiium jmrjtrascens* (11 lids.)
In mari BahishB. Mil Aug.

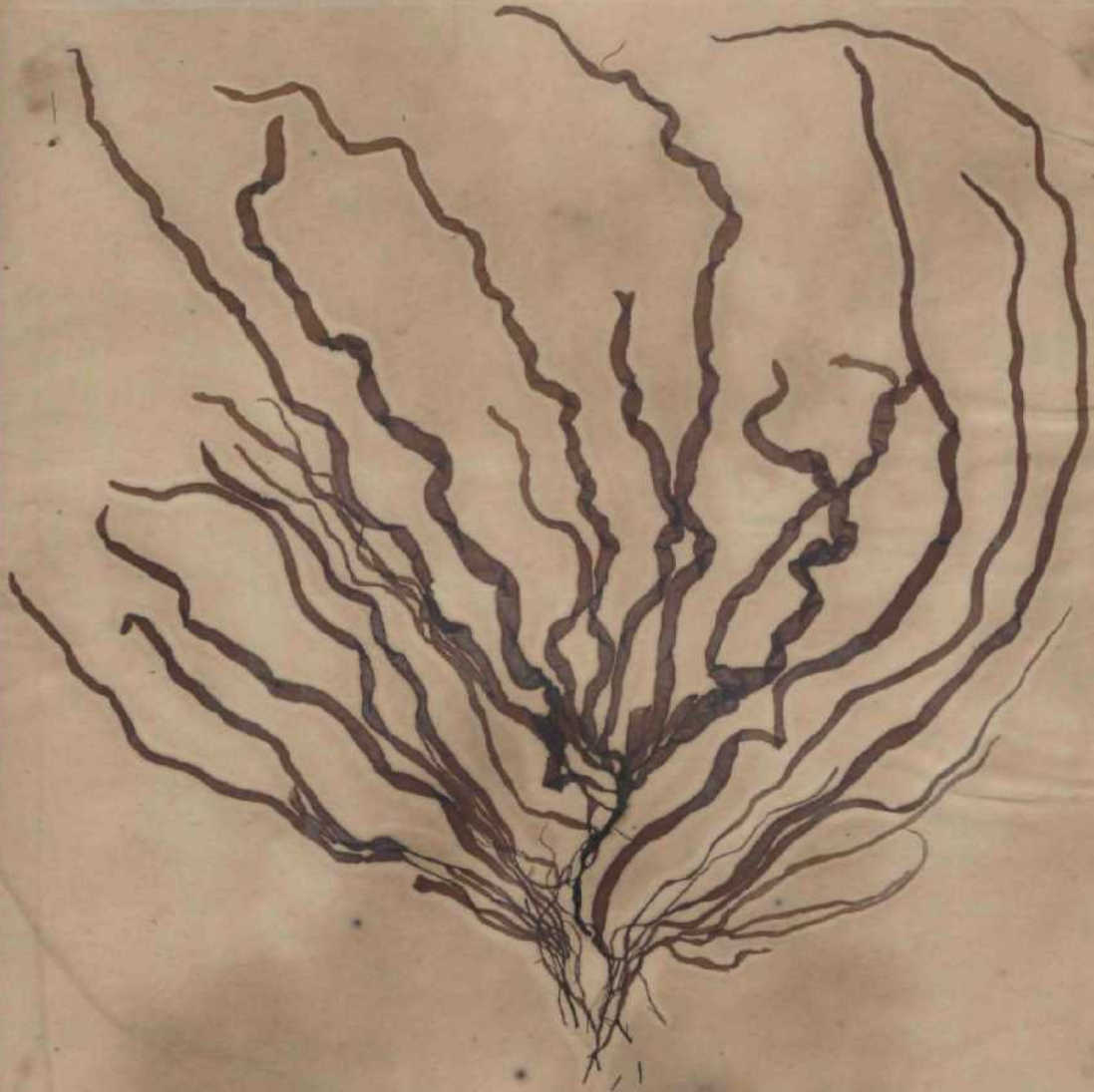


77. *Amphelphia plicata* (Huds.)
In mari Bahusiae. Aug.

80



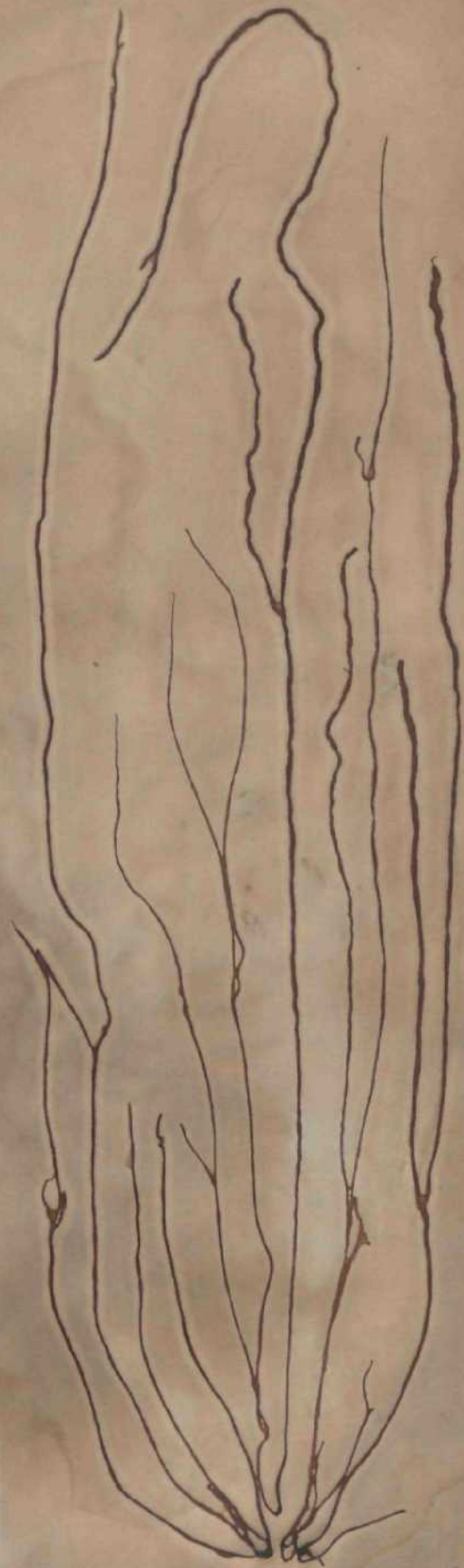
78. *Iridca tiu£** (Staokh.)
In nturi Hhusiii'. &ag.



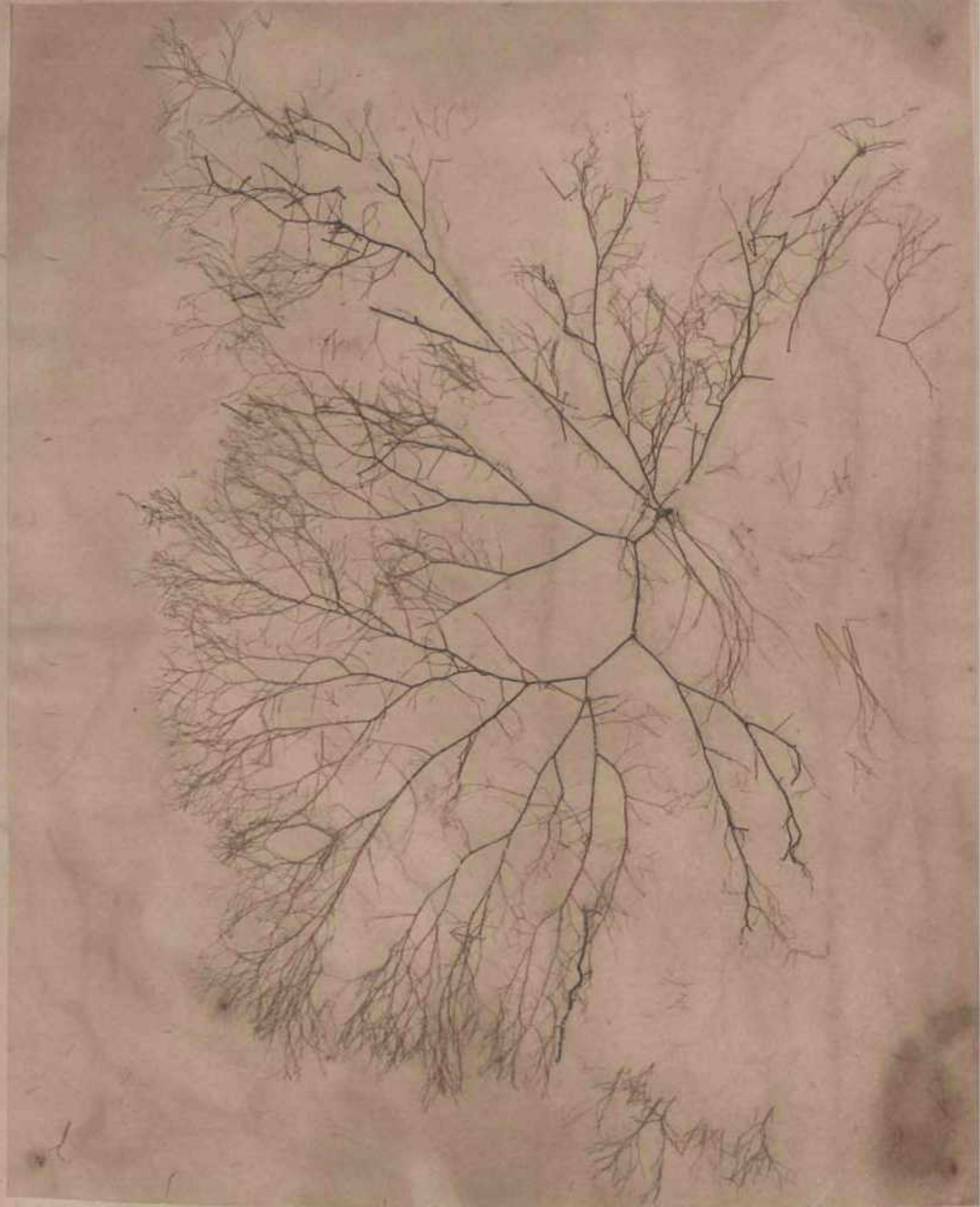
79. Dumontia

In mari BlaiKii. Apr.

Domiui Sopia Akeryari.



80. *Helminthora multijida* (Web. & Mohr.)
In mari Bahusie. Aug.



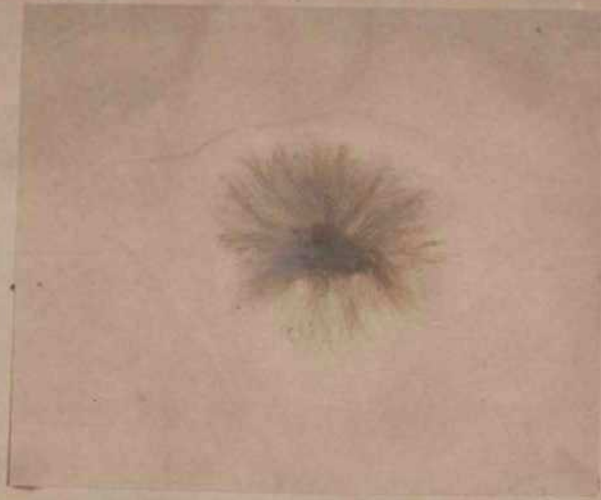
81. *Oeramm rubrum* (Uott.)

. Ju m:iri Hsilmsin¹. Jnl. Aug.



82. *Callitriche maritima* (Ellis.)

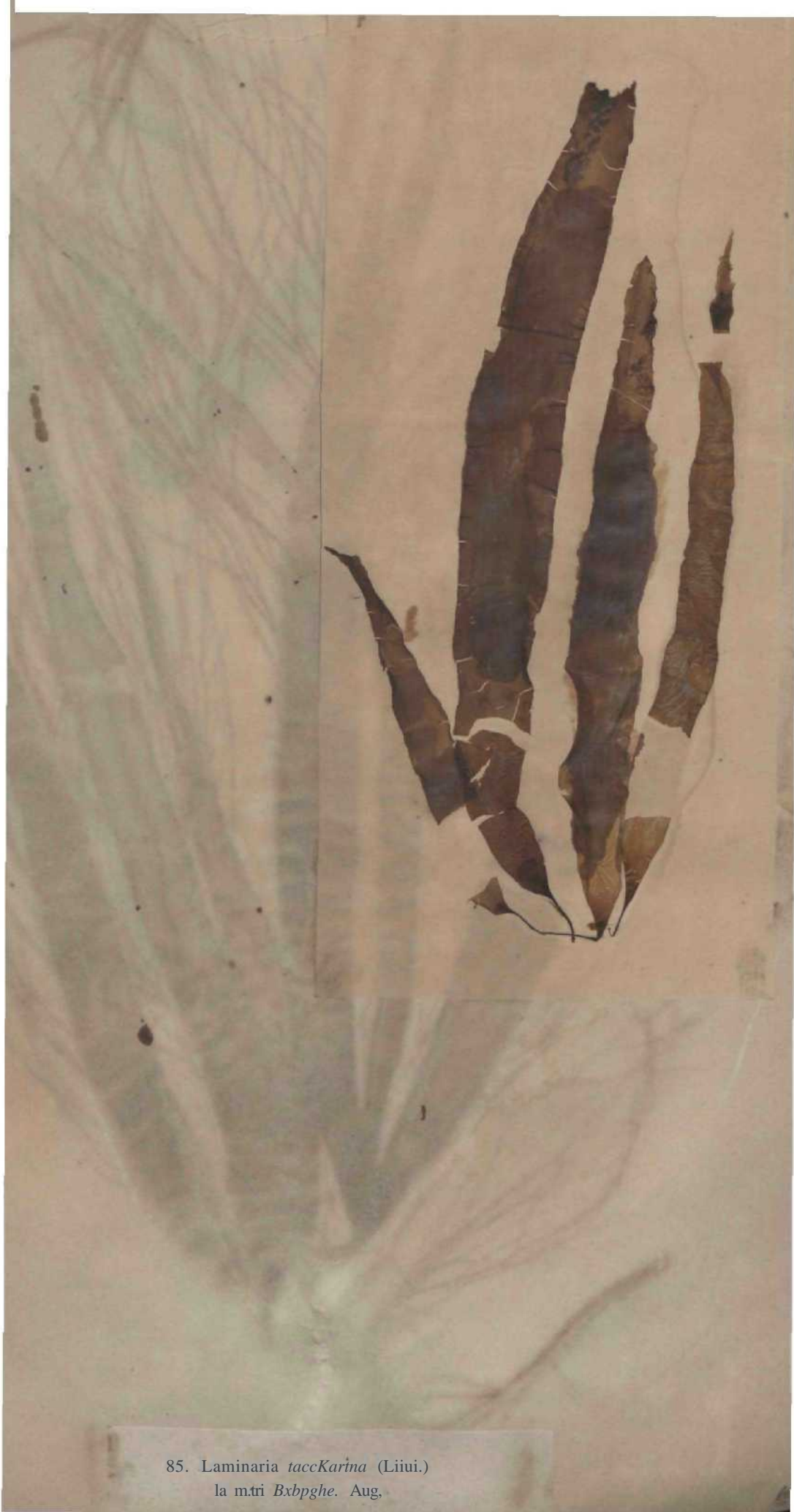
In mari Holsiæ. Aug.



S3. *SpermbduanioD rouobsm* (Ag.)
In mad BahnaiB. .hil. Aug.



84. *Trentepuhlia xecundata* (Lyngh.)
In niari **Bafansis**. Aug.



85. *Laminaria taccarina* (Liu.)
la m.tri Bxpghe. Aug.



82 Lanunaria *diffusa* (Linn.)
In mari JtulniBiv. Jiu.



87. *IVsiiiivsthi acuteata* (Loau.)
In mari Bahoris, Jal



SK DeuMTratu *rirulu* (H. l'an.)
In auri Bahasin. Jul.



89, AsiH. *Lococchia bulioms* (Lamour.) \

In mari lialrosiiu, Jul. Aug.



90. *Punctaria undulata* (J. Ag.)
In mari Bahusiæ. Jul.



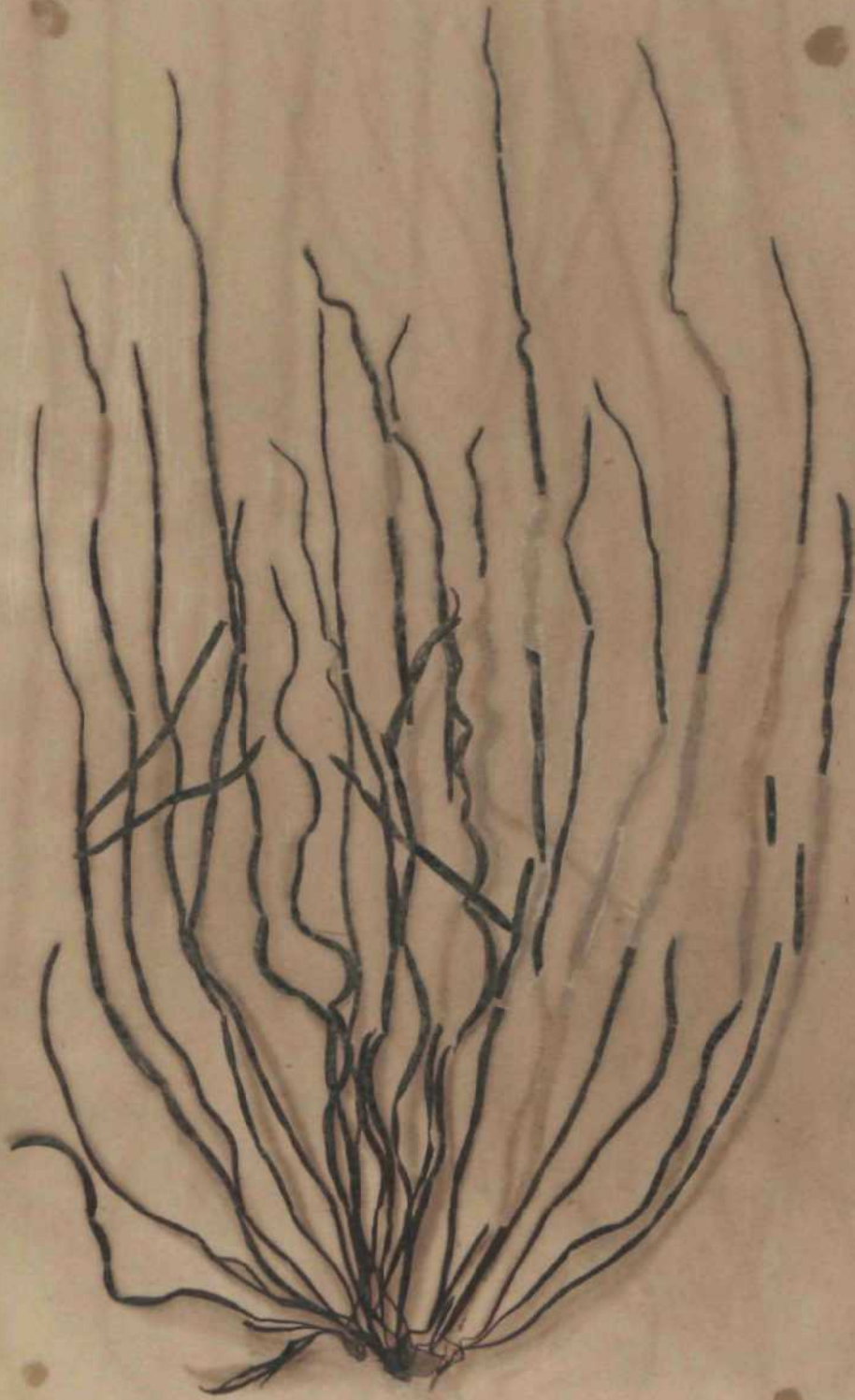
HL. *Btilophora Lyngh/ei* ff. kg.)
In mori liitiisii... AUK,



92. Chorda *Filum* (Linn.)
In mari Bahusie. Aug.

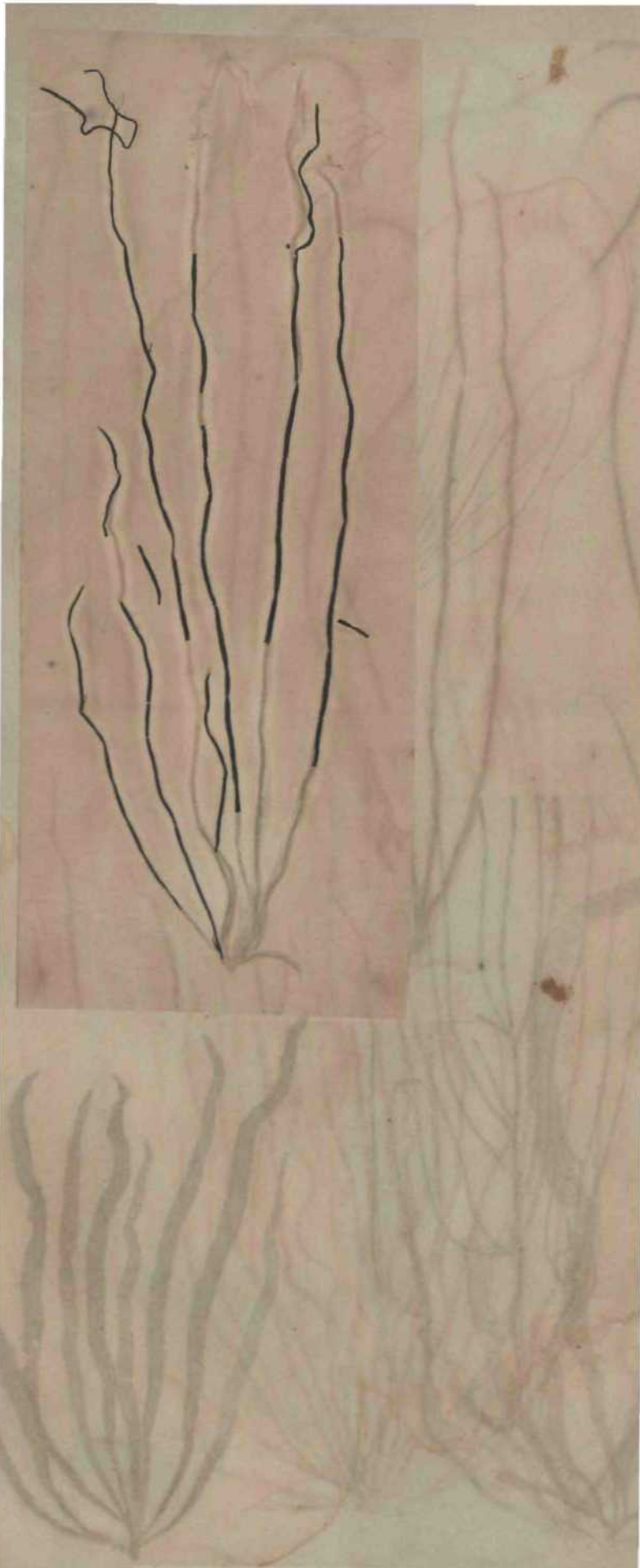


98. *hui'ds tumtitoia* Lyngli.
In iniiri Jt:lhusiir. Maj.



¹J4 *Clorda Lomentaria* (Lyngb.)

Jn inari Hnliisiii'. Maj.



96. Clionia *tintinnulif* Ariwh.

In mni ilahuLi. Sept.

Trichosporangia Alii poxtyntaii uicellularibus
elevatis stipata. Niui diudai LamaaMrie varietas?



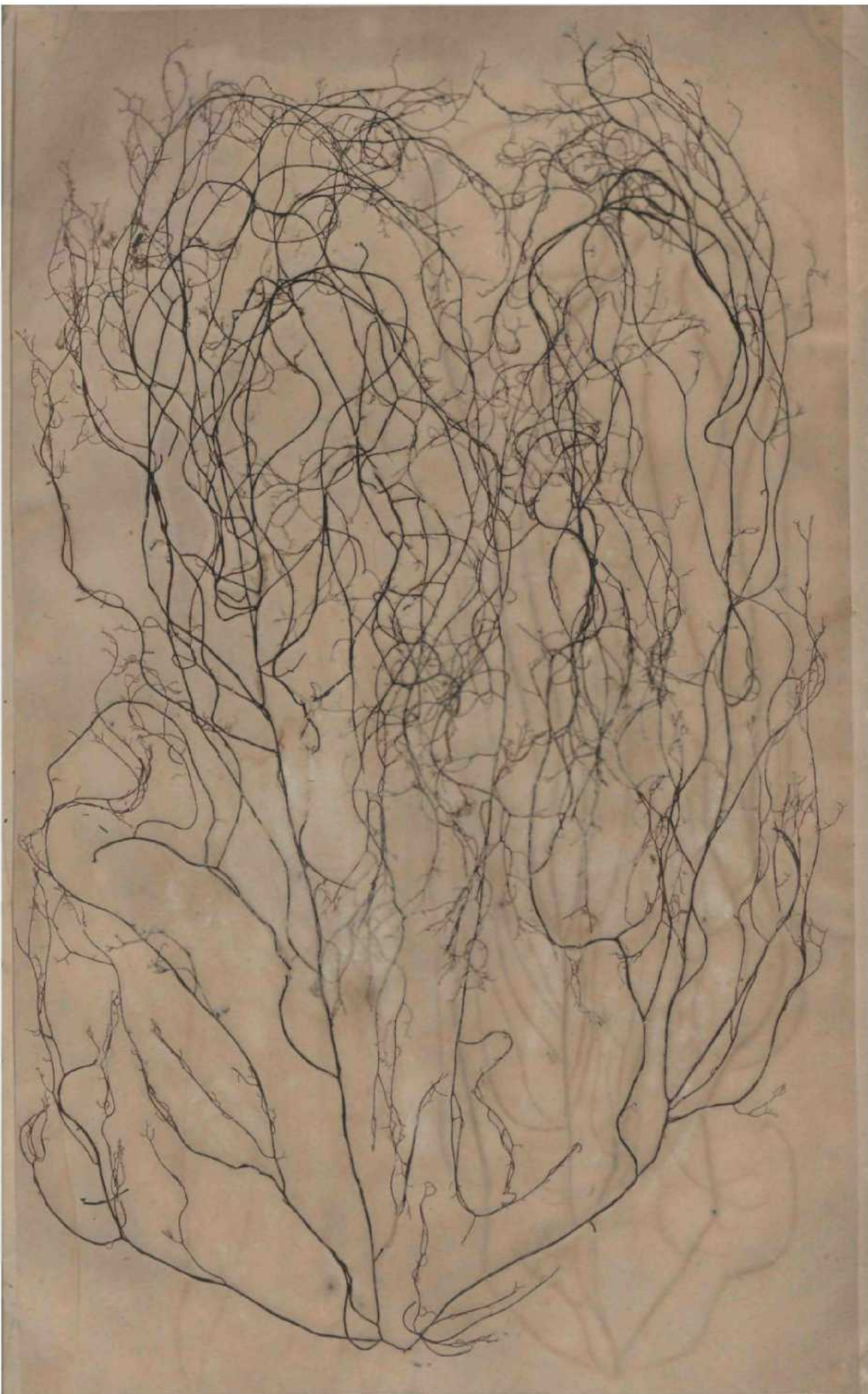
96. *Ilea Fascia* (Fl. Dan.)
In mari Bahusie, Aug.



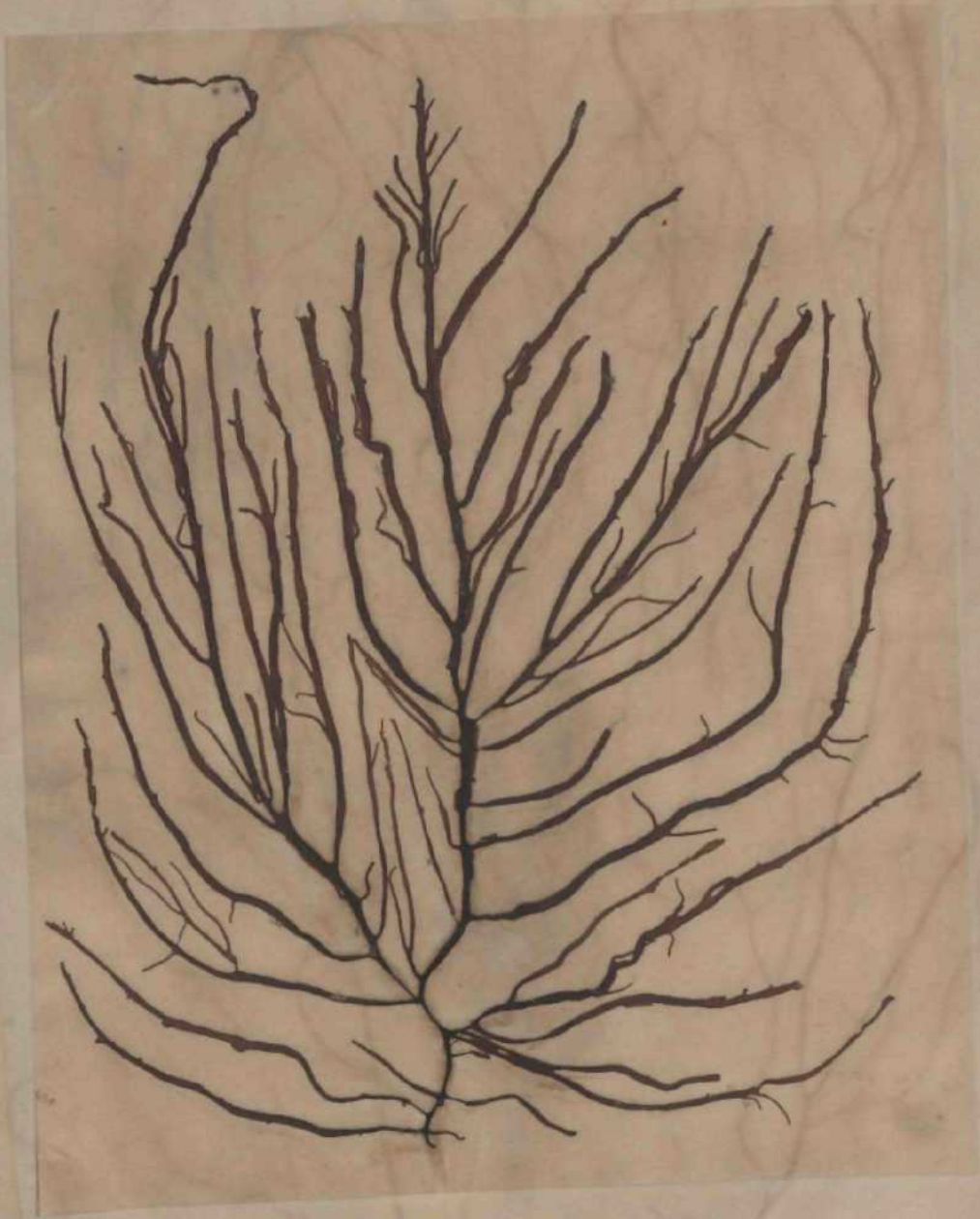
97. Chordfthi jtuqitUifurmit (Fl. L-in.)

In niari liçilmsiar. Aug.

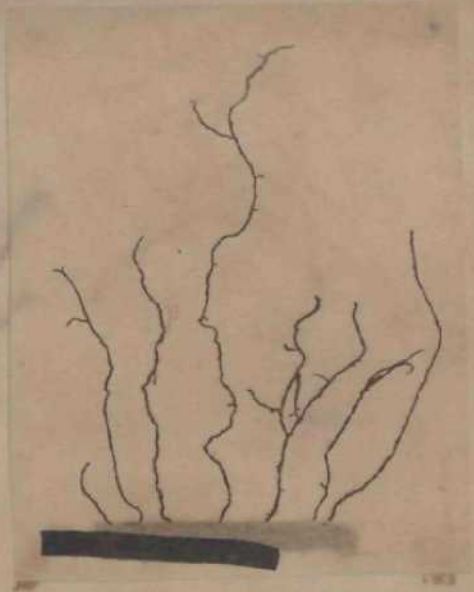
Junior et abelior.



98. Clutniuriii *ilivrifitit* - Atf.
In niiri linliisi. T. Aug.



99. *Mesogloia varmiularit* (Ag.)
Lu nari Babul*, An.



100. *Heaogloia Zo&tm* (Lyogb.)
In nmri Ililmsiji', Jul.

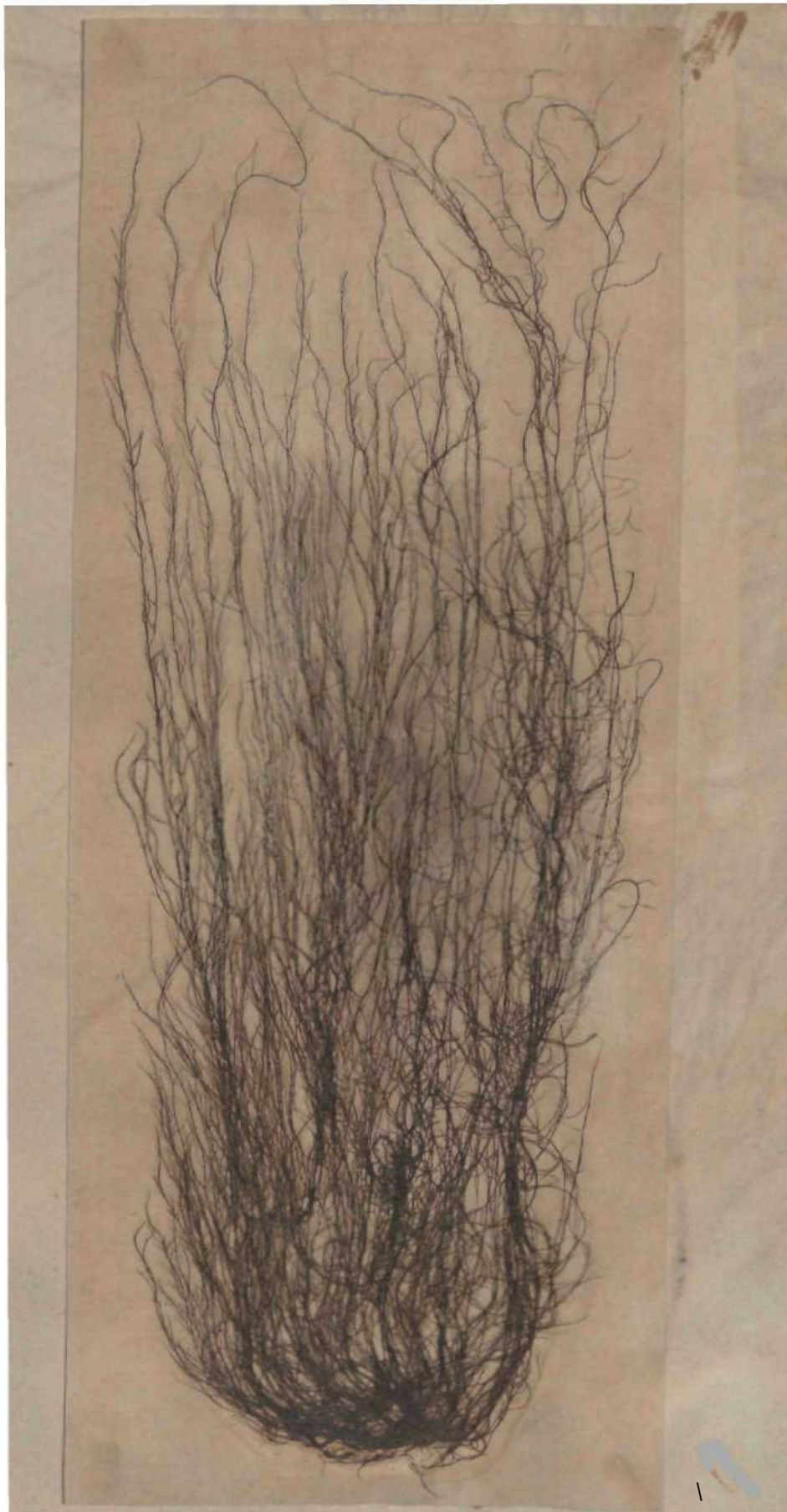


101. *Lcathesia (Ufformu)* (Linn.)

In man Bahtteise, Atus.

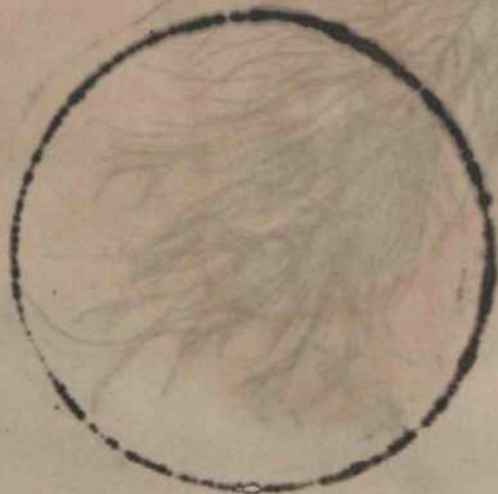


102. *ElftchSata fudeok* > (Volley.)
IN mnri Baiiurie. *kag.*



103. *Dictyosiphon fenictrix* (Uuds.)

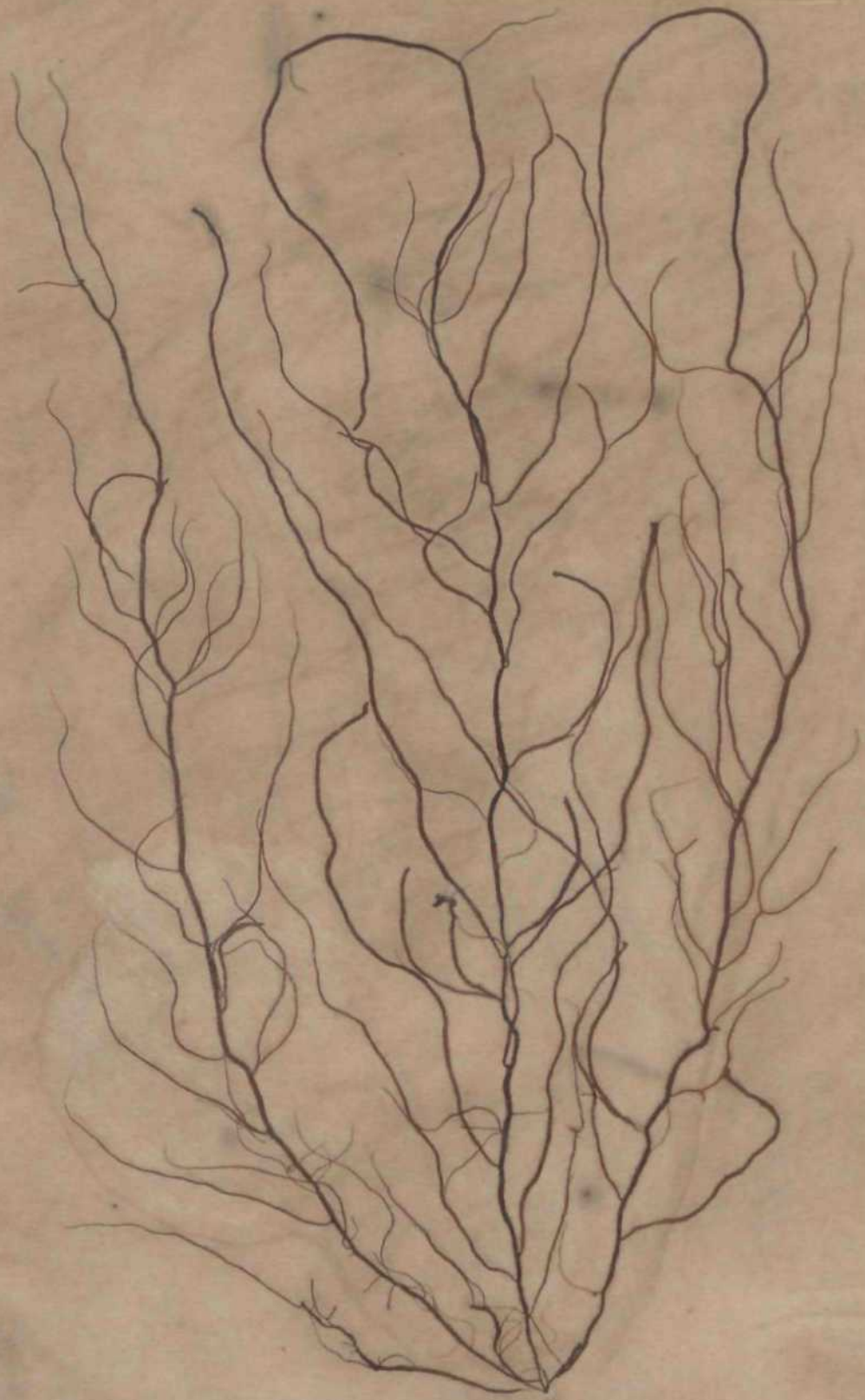
In mari Bahoeue. Maj.



104. *Dictyoaiphon flettkidaetii* (Indu.) var.
jpdMrtcalatns. (tv, Lyngb-Hydruplyttab. i-i.f. ;i.
In m:ri r:ilni-iii. ing.



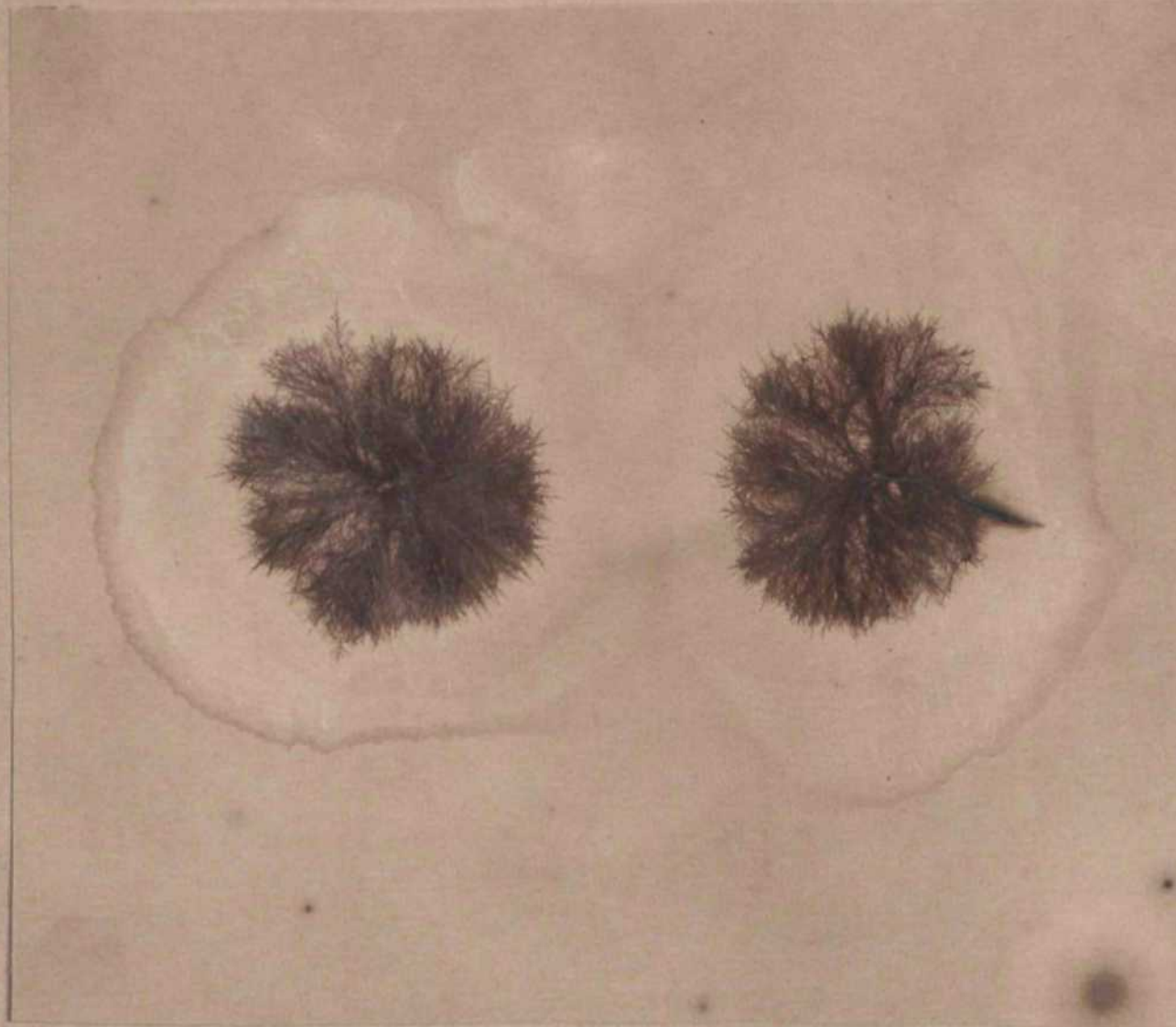
105, *Dictyosipon trijireida* (Lyngb.)
J. C. K. a. f. l. a. g. t. f. i. f. e. r. a.)
In mari Bahusiae, Aug.



10G. Dictyosiplmn *Mesoghia* Areschii,
Bl&bareholmen in Bahuaia. Jim.
Alga siugalnrns, forsai C:ordarite divtiricatc furnu jti venilis.



U7. Splisic'itrifi *pbimow* Lyn^li.
Fiskehæksbil In Balragjo. *keg.*

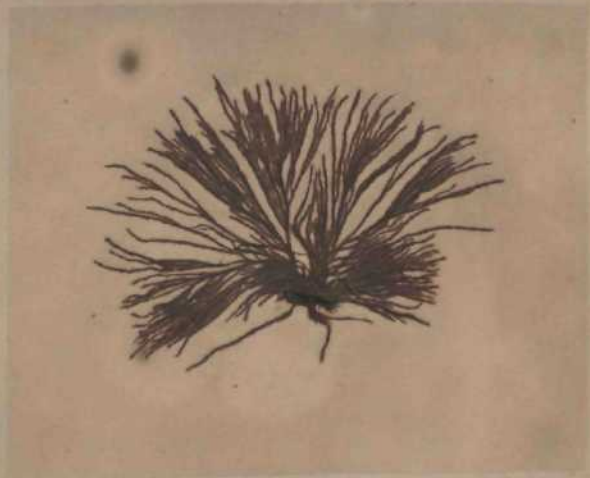


108. *Sphacelaria cirrhom* (Koth.)
In man Rahunise. Sept.



109. **Sphacalaria** *virrhota* (Il4>th.) fonua **propagvHfexa.**

Fi^kebiukskil in Ilahusin. Aug.



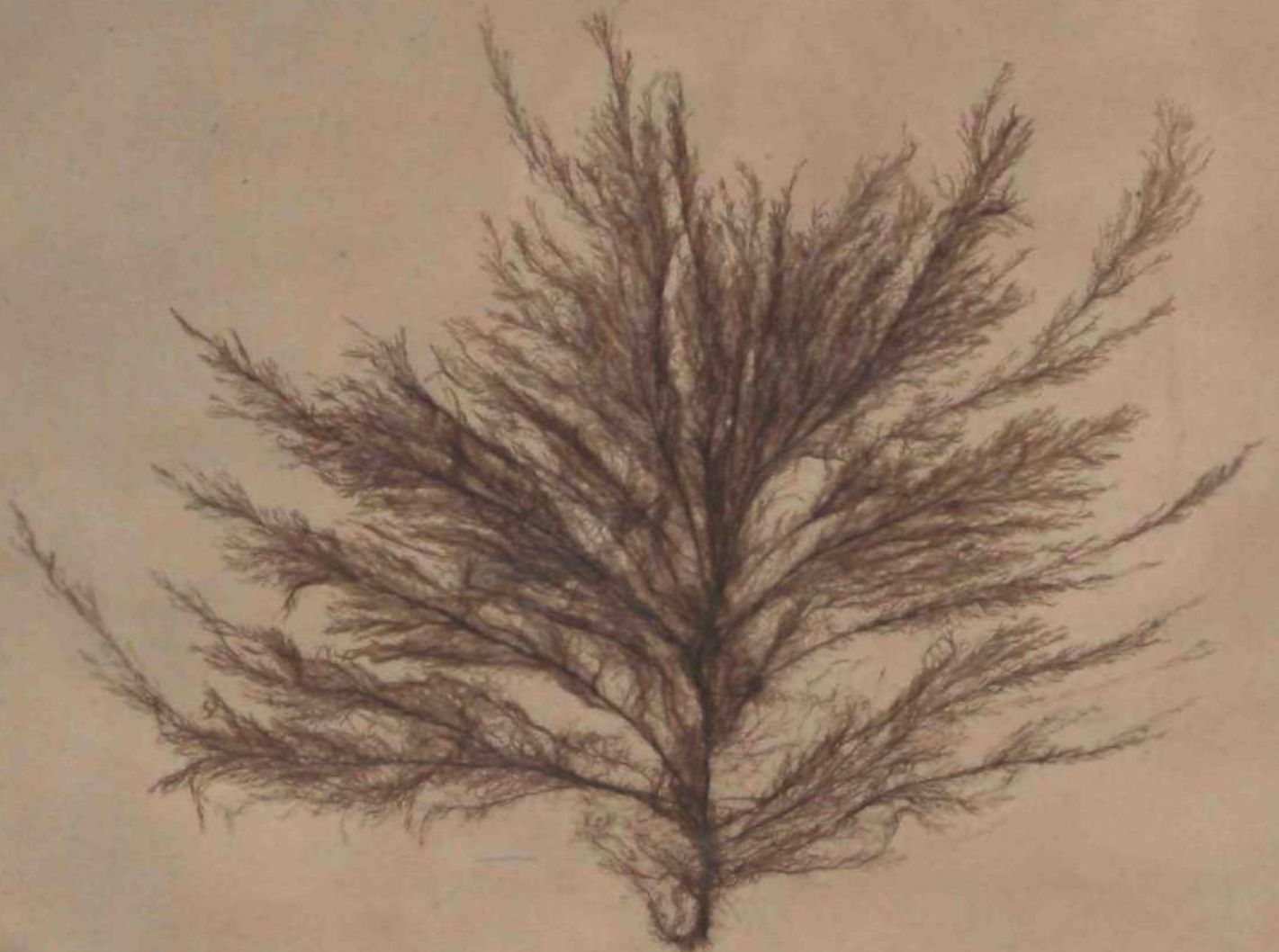
110. KctwarpLis *tomenloms* (Hilda.)
In man Bihwiw. JHI. Ang.



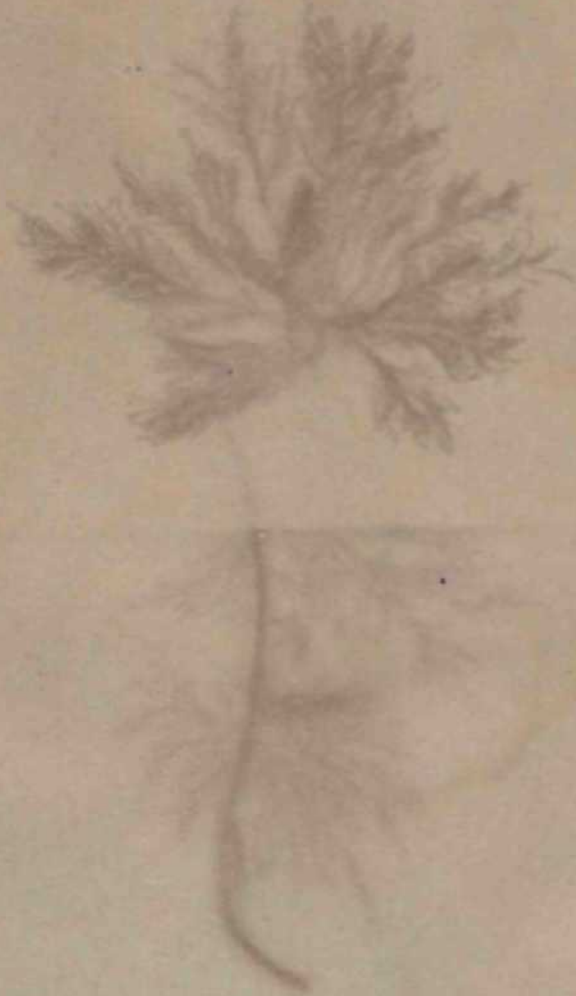
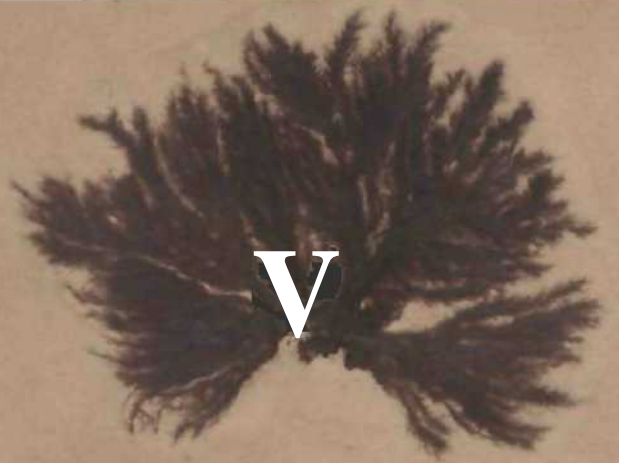
111. *Ectocarpus lutomlis* (L.) J. Ag. gen. «p. var.

Marstrand in Ilalmsia. Maj.

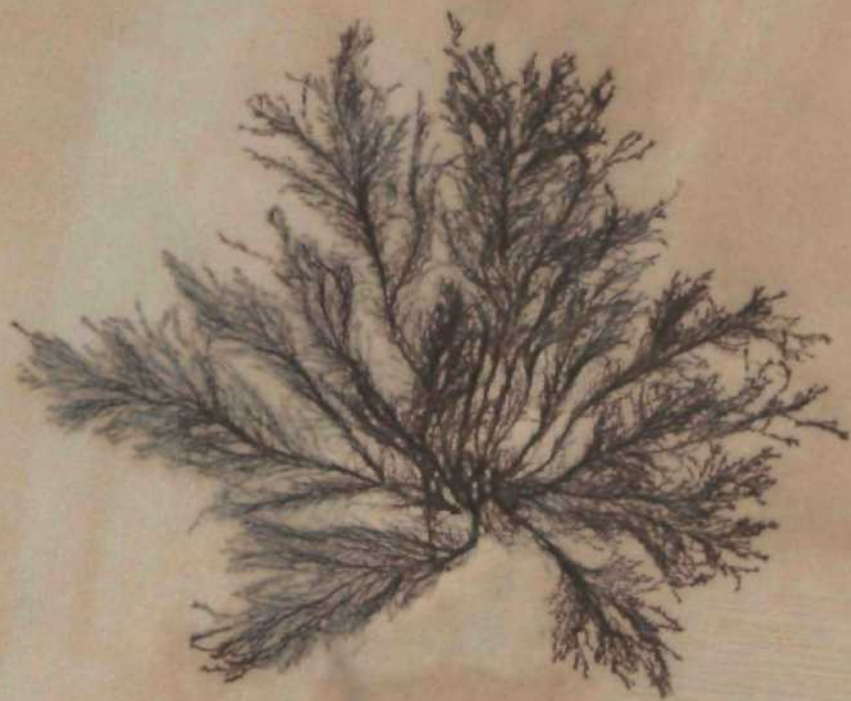
Obs. Oospoymngifl vt tiidiotporau^ifi in codetti >] cinnine.



112. Ectocarpus *s&ettmn* Ag.
Fiskebäckskil in HHHHHUU Aug.



U3. *Ecfaxatras jinma* J. \^ . *nn-*. *rupiuolt.*
In *Arojulis jimp*¹ *Marstraud*, *Mnj.*



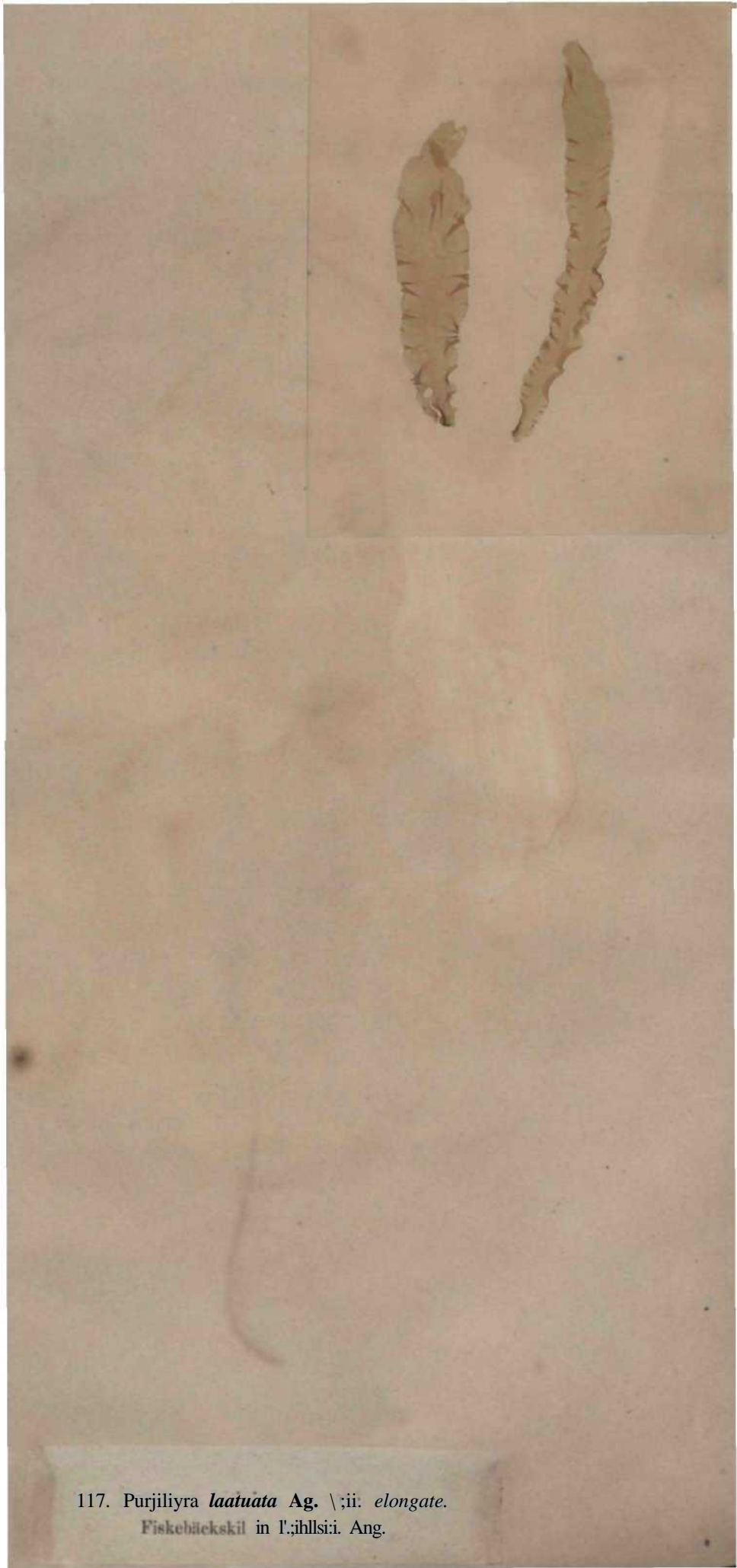
114. *Ectocarpus fasciculatus* Grift
Fiskebücksil in Bahueia. Aug.



115. *Eetocarpus fasciculatus* Griff, var.
Fiskebäckskil in Raliisfci. Aug.



116. *Porphyra uuiviata* kg.
hi inari Bahusiff. Maj.



117. Purjiliyra *laatuata* Ag. \;ii: *elongate*.
Fiskebäckskil in F.ihlssi. Ang.





lit). *Ulva Linza* Linn.
In mari Bfihosiffi. Aug.



120. Ulva *ordi<Ja Areach.
L&ngcdng (trope Gittljoimrgum. Mnj.



121, *ulva Laetuca* Ag. !
Wnrholmen in Bsbwu Mij.



1.": KittfnniM>r|iljsi *intent inatis* (Linn.)

In man ItahitKla. M:ij.

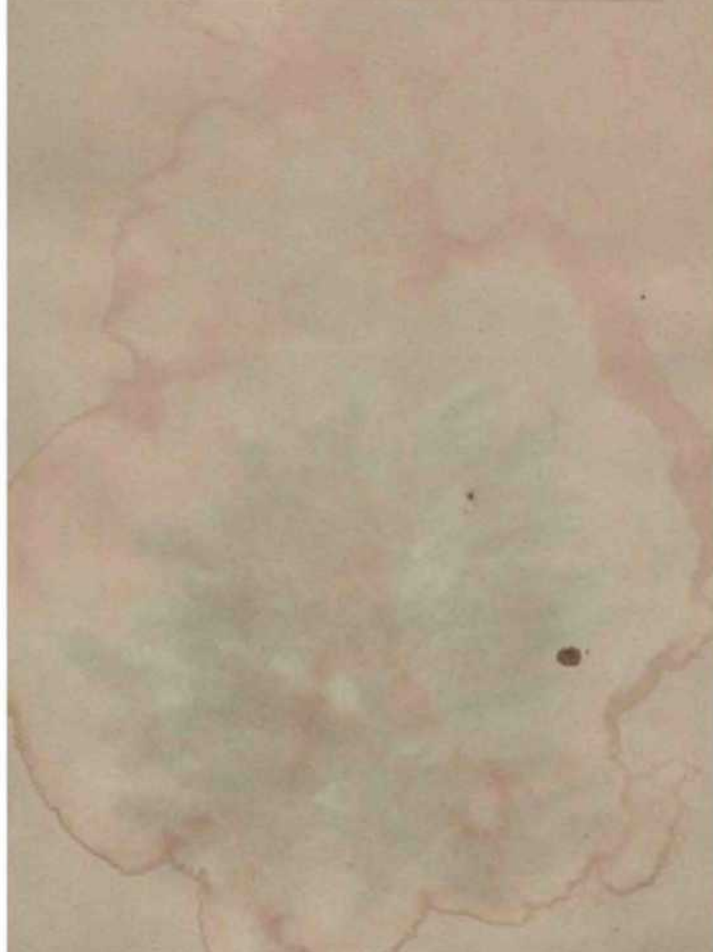


123. *Enteromotpha comprem* (Liim.)
In Muri BnLdsiiBi Aae.



124. *luteromorptui datkrtta* (Roth.) var, 'confer^jt
Ctt>ea.

iii nuui Balnsue. Jul .

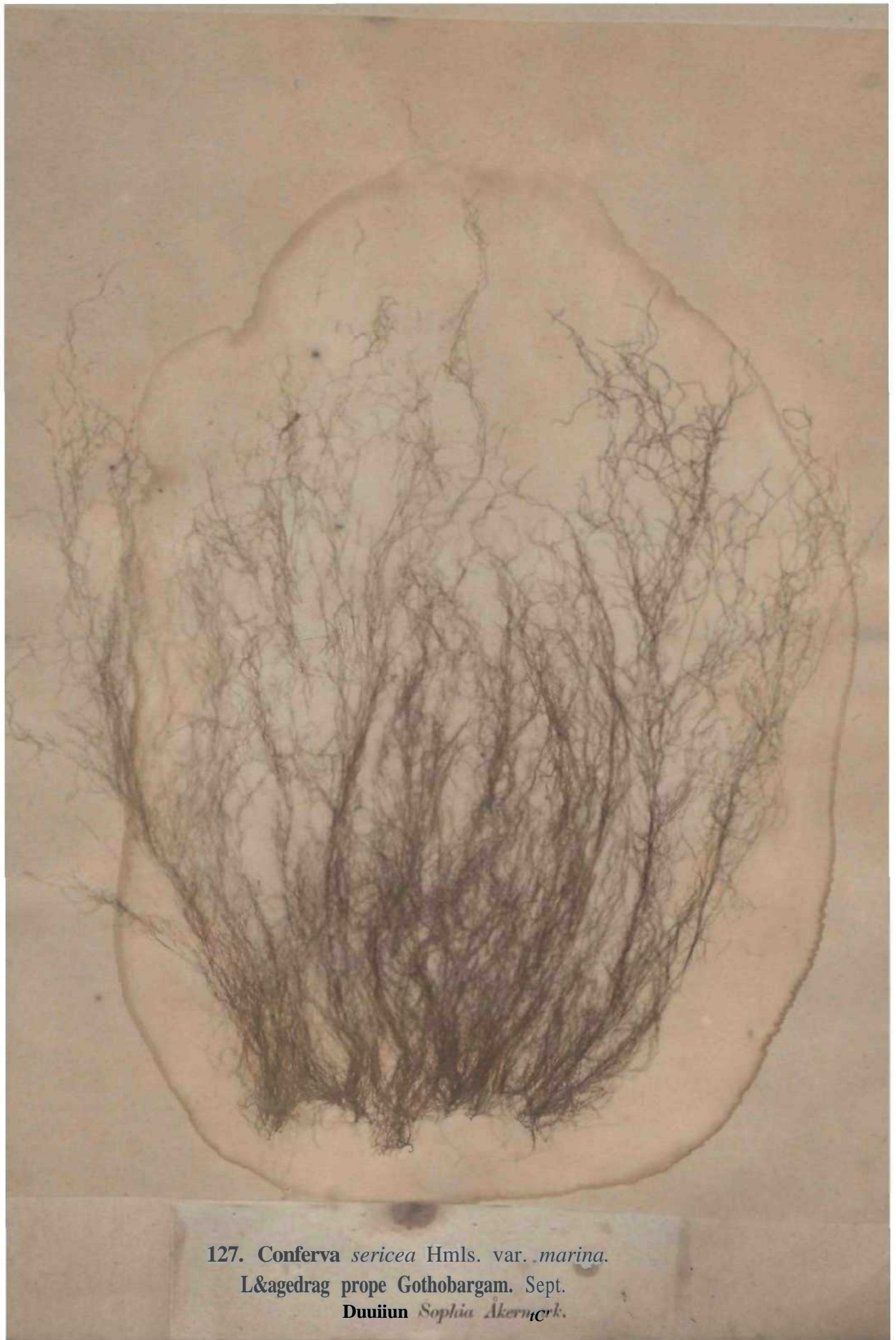


U.i. *Triuitium percurxum* (Ag.)

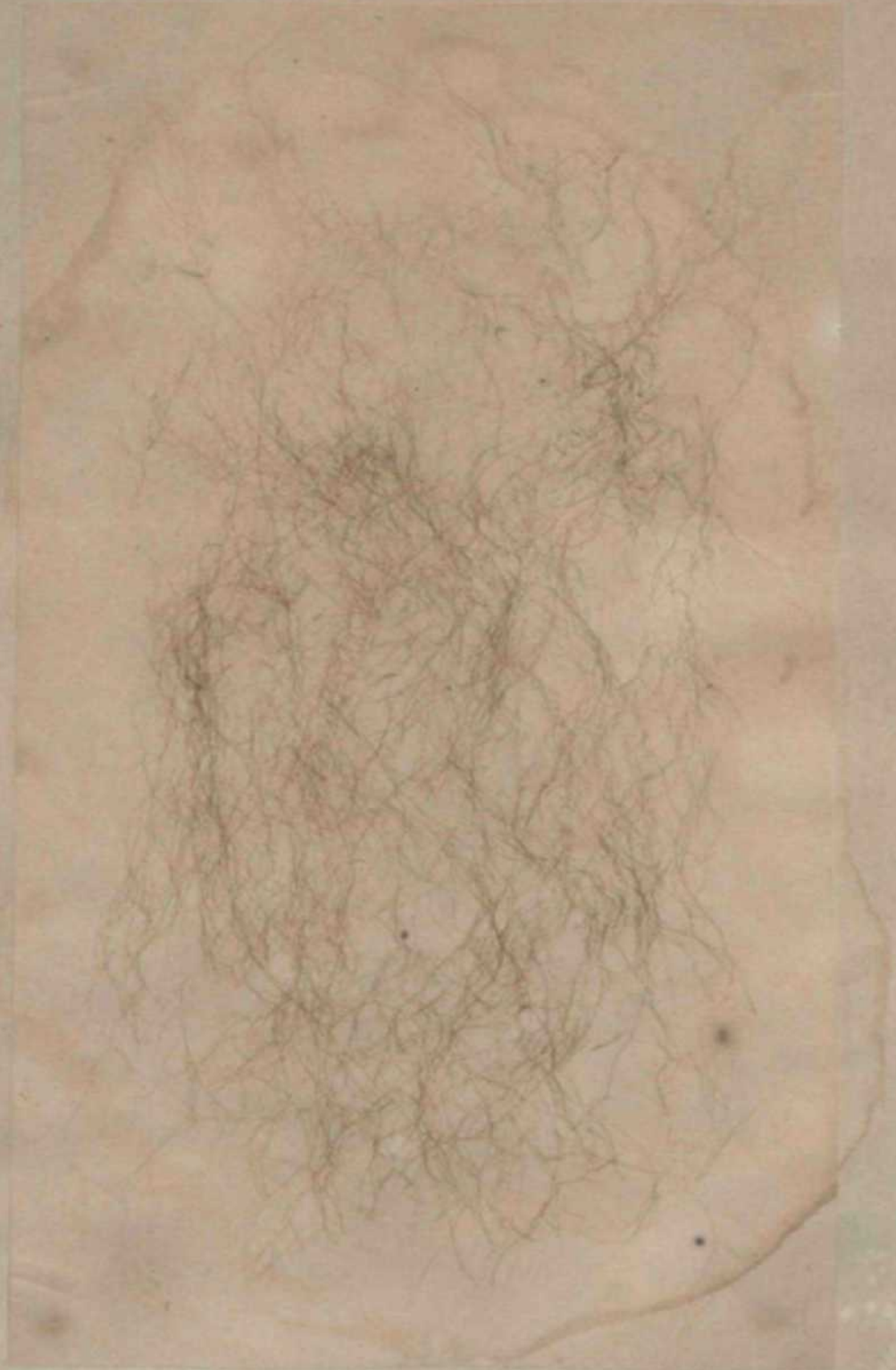
In m:ri o[[iUM:i', JIII.



126. *Conferva ruypestris* (Ag.)
In mari Bahusise. Maj.

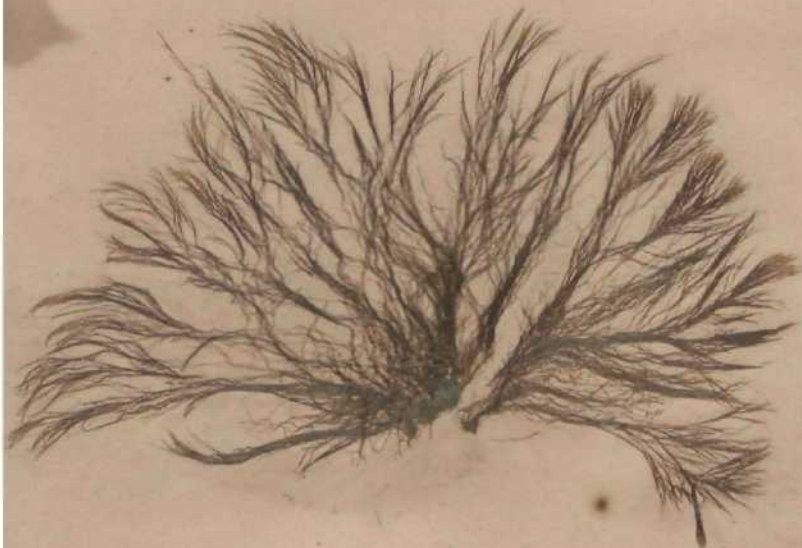


127. *Conferva sericea* Hmls. var. *marina*.
L&agedrag prope Gothobargam. Sept.
Duuiiun Sophia Akern, Ark.



128 *Conferva- frtuSk* (Griffiths.)

In man BakMHB. Aug.



129. *Conferva arcta* Dillw.
Marstrand. Maj.



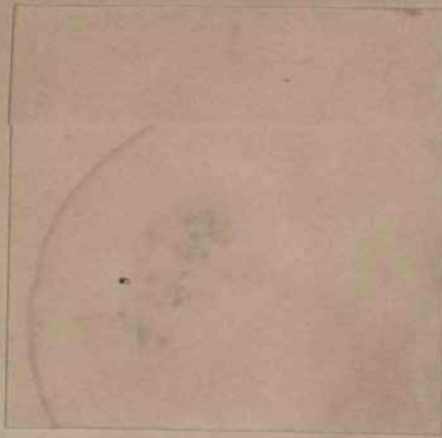
130. *Conferva imciab** fl. Dua
In niiri BaliUBue, M:jl.



131. *Conferva oaspmta* J. Ag.
In man Baktuue. Aug.

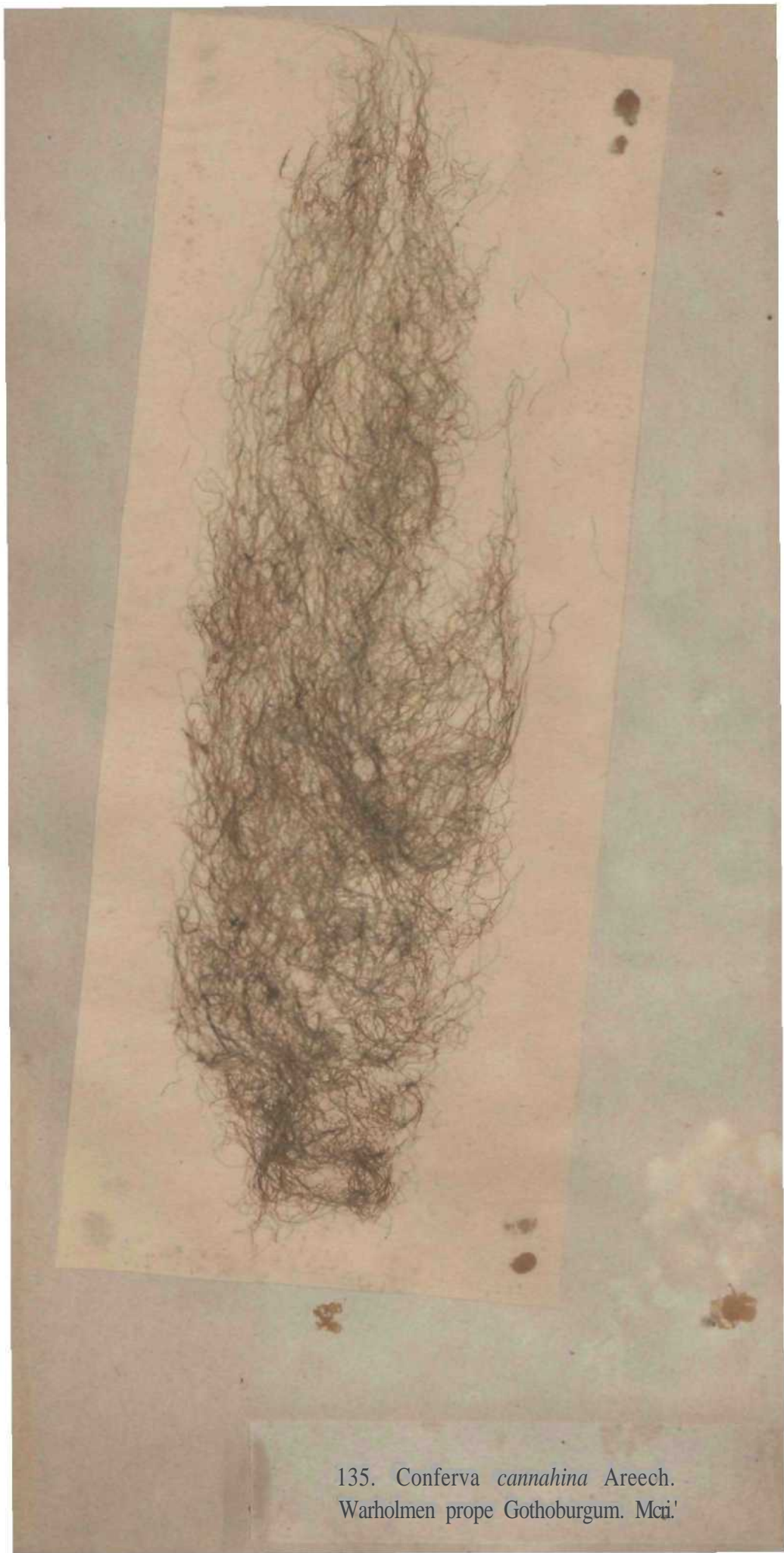


182. *Conferva tpeiota* Carm.
Warhobneo in BtfanstR Maj.

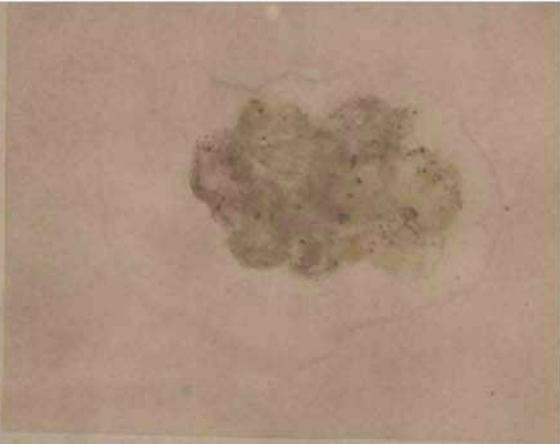




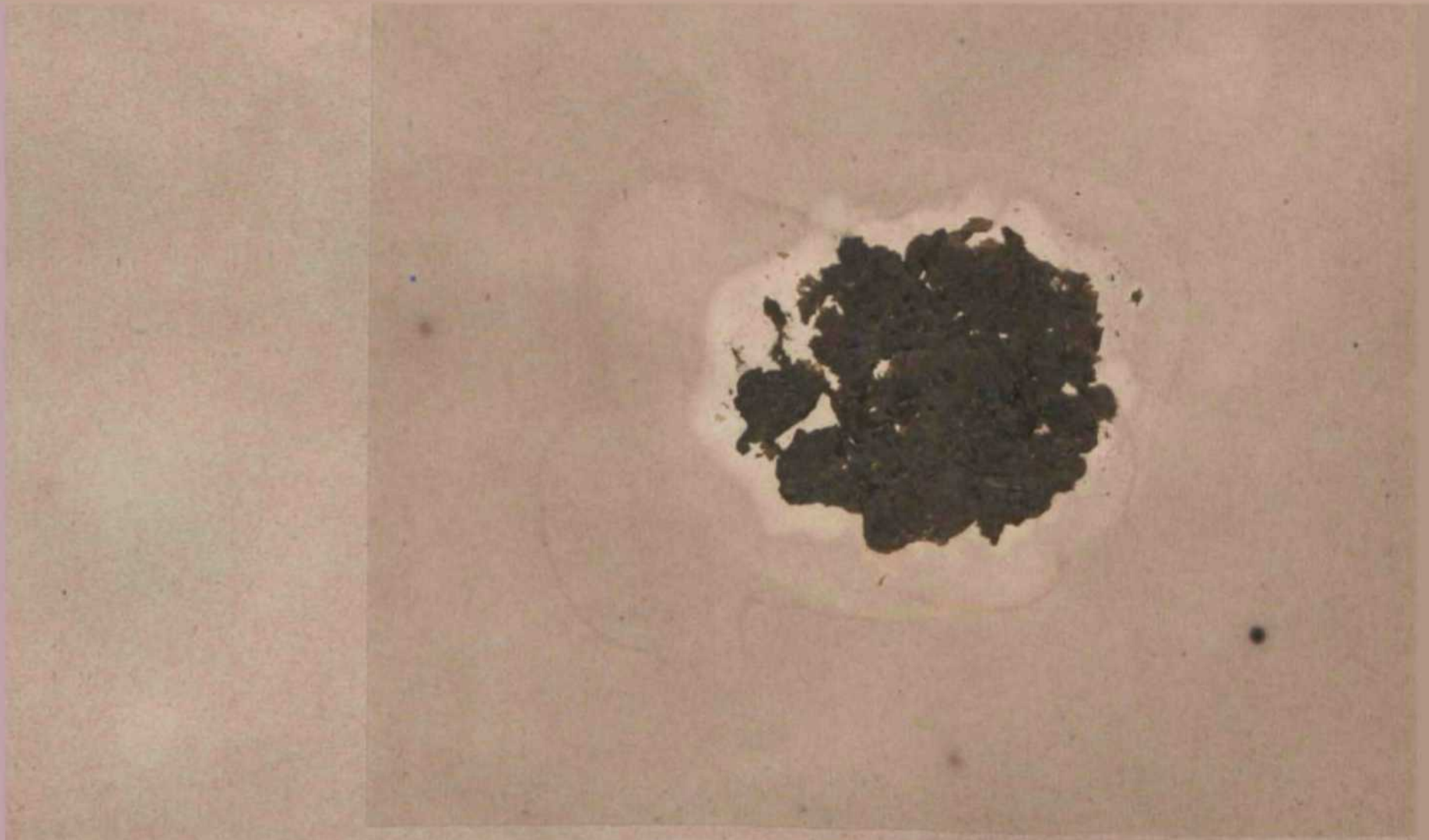
154- *Conferva Linmu* V. ban.
Warholmen in BallMjt. Mnj.



135. *Conferva canahina* Arech.
Warholmen prope Gothoburgum. Mci.!



136. *Conferva implexa* Dillw. var. *b.* Alg. Scand.
Fiskebäckskil in Bahusia. Aug.



137. *Prasiola rvispa* (Lightf.)

In terra prope Gotlmlnirguni. Sept.

Domina *SopJria Akennark*.



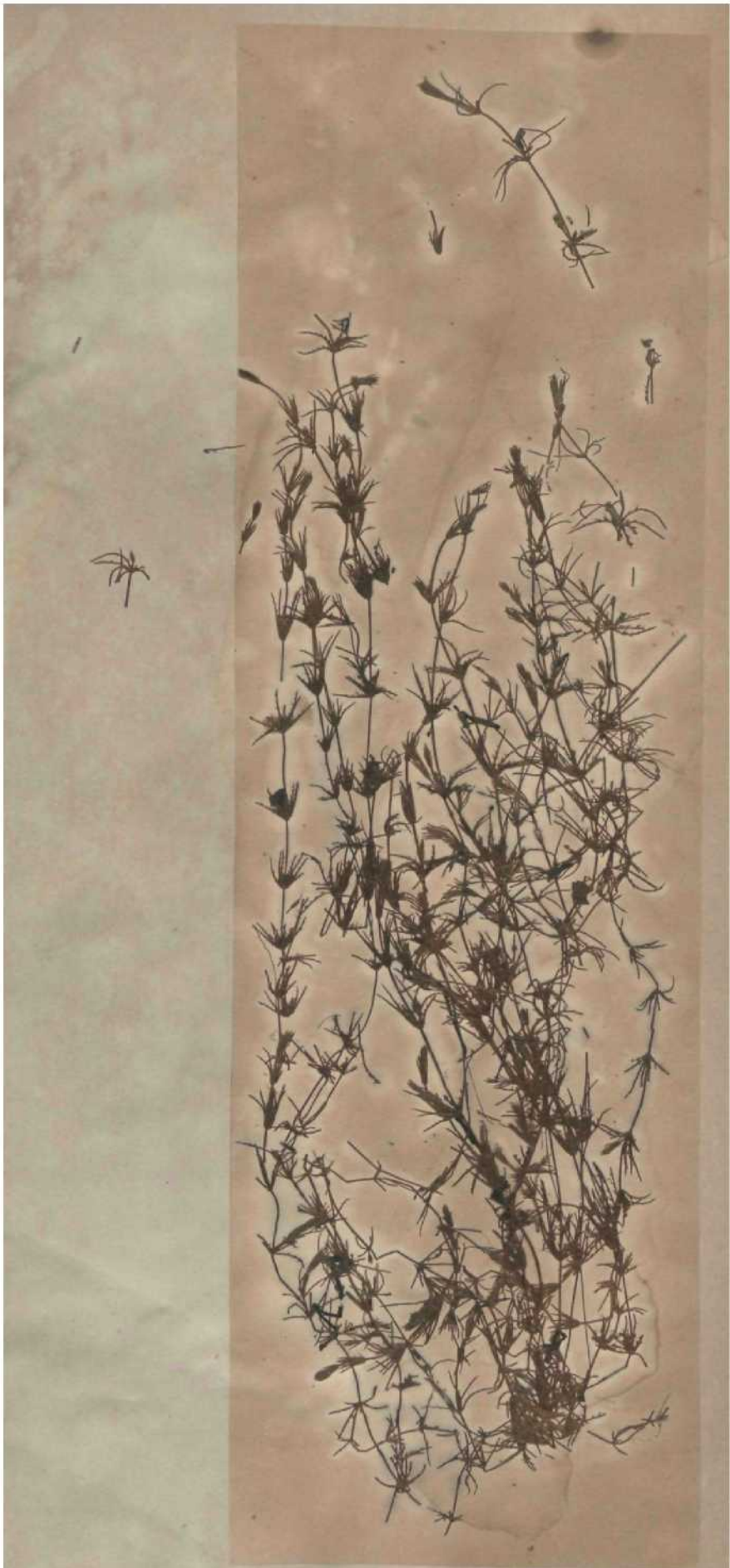
138. Pruiola *ttipittUa* ton Snhr.

lu gnxin ai|. mnr. iinimhitis minis Bahnsiemii. In|.



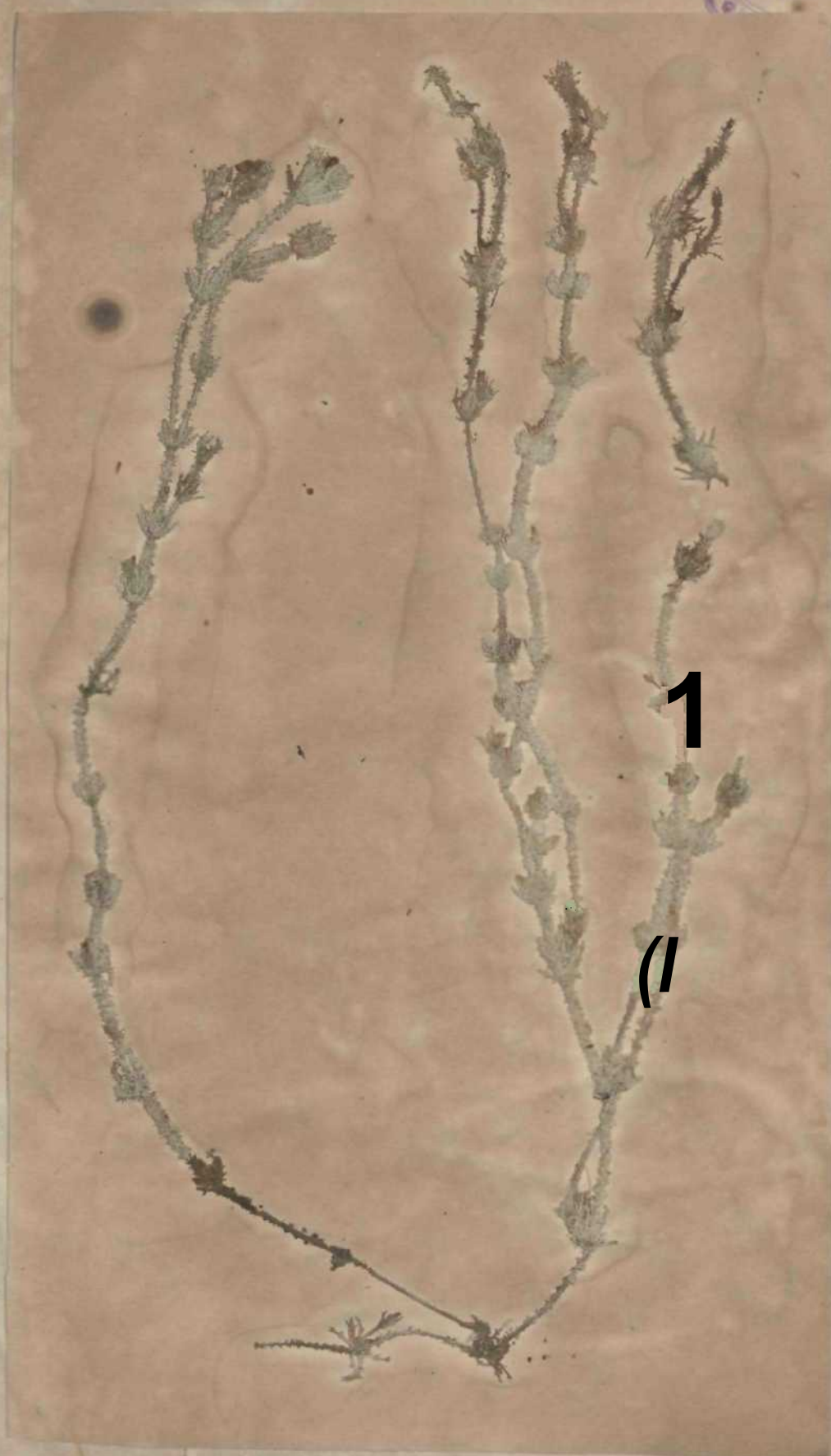
139. *Calothra scopulorum* (Web. & Mohr.)

In scopulis mar. Bahamas. Aug.



1-lo. *Chamaecrista fasciculata* Gaertn.
Grimstorp in Vestrogothis. Aug.
C. F. O. Nordstedt.

ROYAL BOTANICAL
LIBRARY
SINGAPORE



111. *diara pofiyontta* A. Braun.
Arrif in Semi*. Aug.
L. F. Wahlstedt.

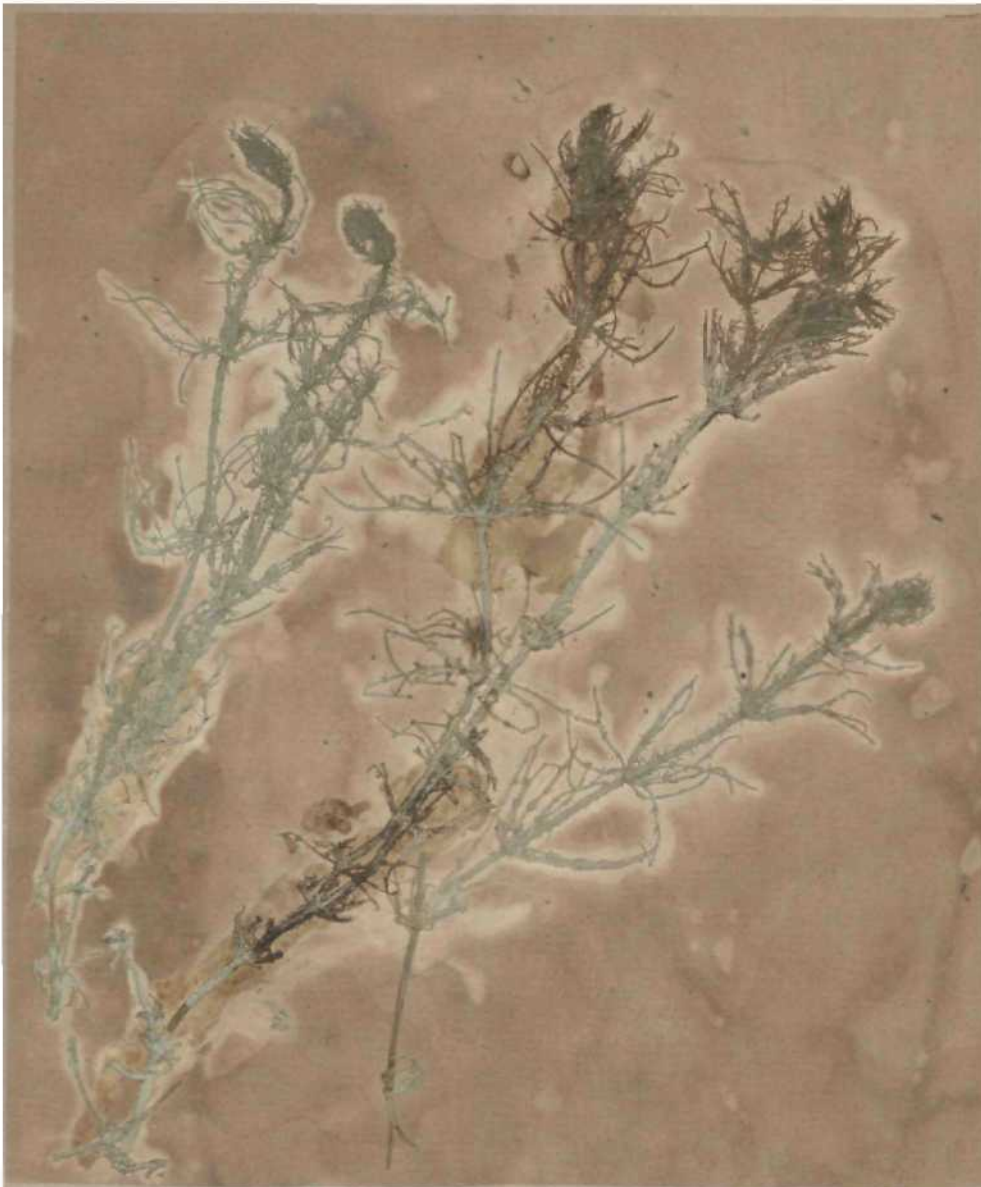


112. Chara topwä Wtulr. *r>ouü Bmuu. •
longifolia, sterilis

Gullkroksjon in VcBtrogiuüis. Log
(. I. (. XmUaJt,



143. *Chara hispida* Wallr. β . *brachyphylla*.
Arrie in Scania. Sept.
C. F. O. Northolt.



144 Ohara kúpida WáJr. vtur.longi 'nui Wattm.
Anarp in Scanw. Sept.

C. S. G. ...



Hi, (*'haiii ba&ica* Fr., *finniii elongtln.*

Malmoj;jr. Aug.

L. F. Wahlstedt.



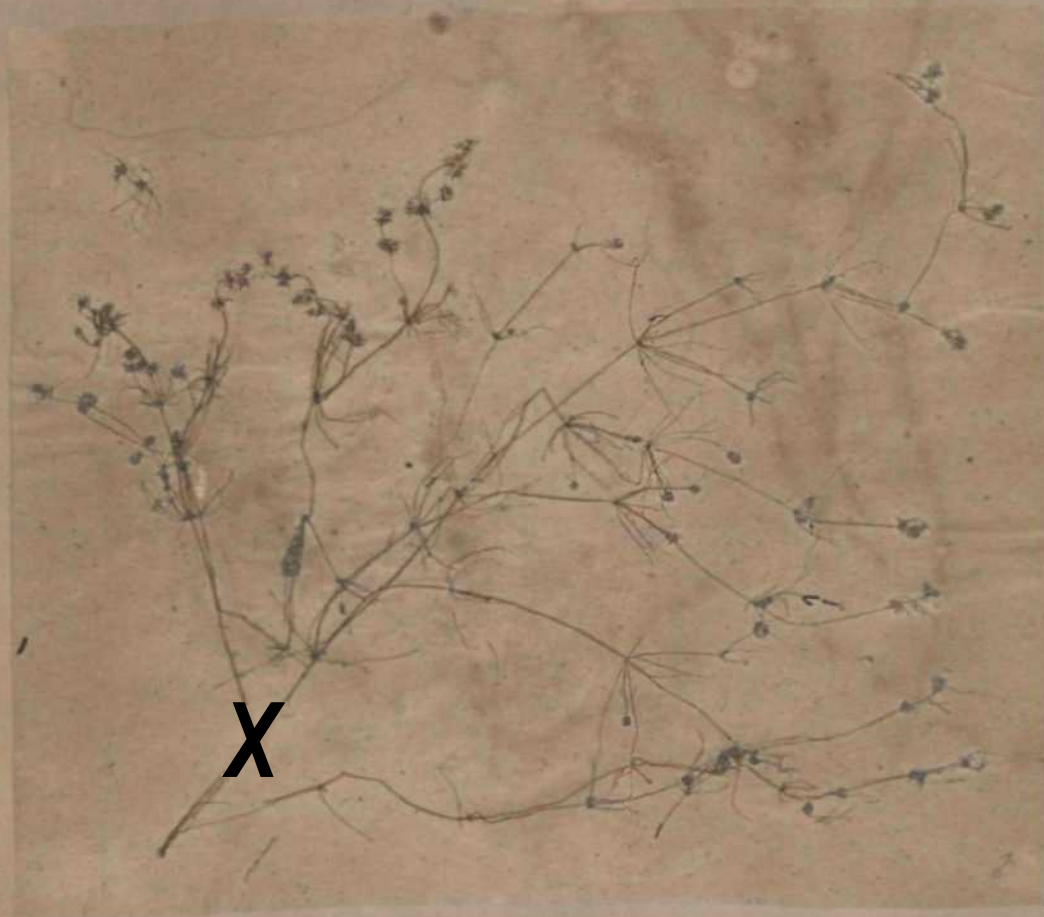
[4(i). *Chara contranà* Hi'sum.

QnHkntkeo in Ventrogotliiii.

C. *contranà*.



U7. OlibLni foOiAa Al- Bnum & subhispidia.
Arric in StJinia. Bept
†. J. O. Nord * Jt



148. *Neriophila tynearpa* Thunb.
Igelyo in Vihti. Aag.
f. M. O. L., II.

t



14! I. Niti'lla ujWCH Ag.
Swdematfin in V. M. G. W. B. Jut.
r. F. ". \onbttdt



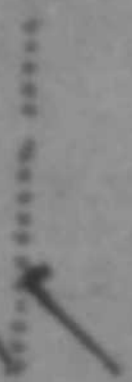
150. *Nitella batrachosperma* **Reichenb.**

Mtickeln in Smnlndia. Sept.

C. F. O. NordntedL

INDIAN BOTANIC GARDEN,
LIBRARY.

PROCESSED



.....

ACCESSION



.....

CATALOGUING



.....

CLASSIFICATION

.....

DATE

14.9.65

.....

BOOK CARD
Indian Botanic Garden Library
BOTANICAL SURVEY OF INDIA

\$-108807.

Call No. A Ace. No. i <

Author *Hrescho & J. E.*

Title *Alg. Ae. Scandinavicae*
exsiccatae.

Name of Borrower/Code No.	Date of Issue	Date of Return

f

INDIAN BOTANIC GARDEN LIBRARY
BOTANICAL SURVEY OF INDIA

4